

# LGBTI Homelessness

Drivers, policy reform and service delivery  
needs

Ruth McNair

National Homelessness Conference  
August 2018



# Outline



1. LGBTI specific drivers & homelessness



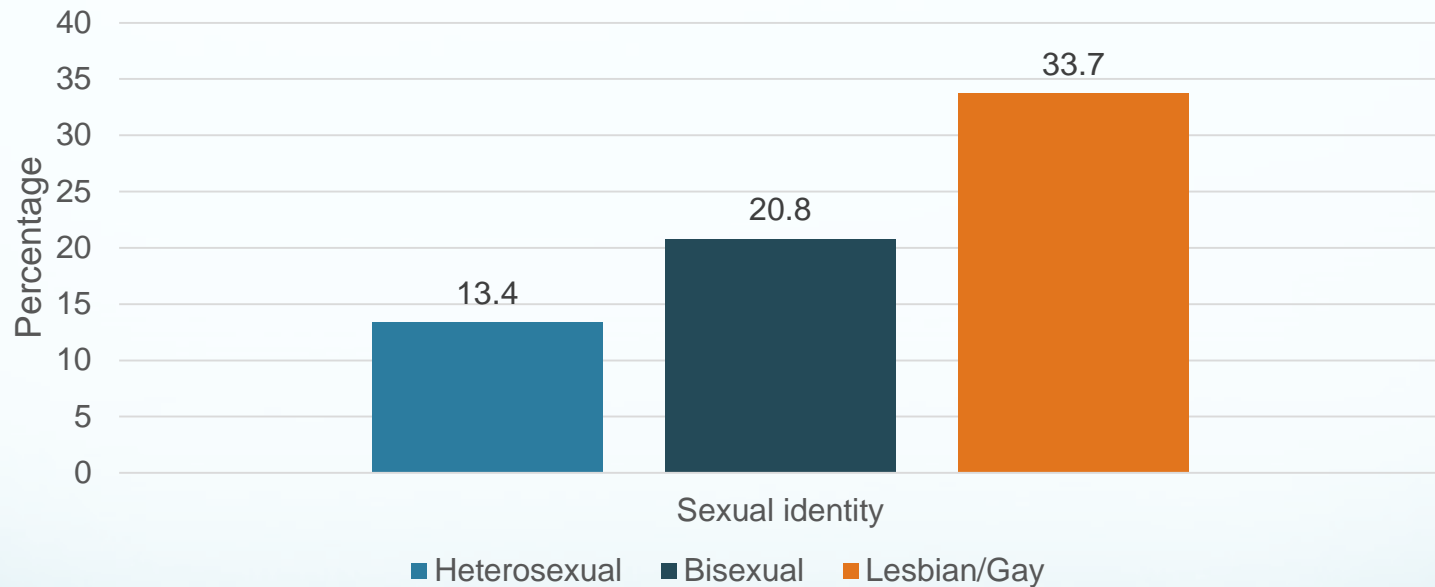
2. Systemic reforms needed



3. Service delivery and LGBTI inclusive practice

# LGB people and homelessness - Australia

Ever experienced homelessness  
2014 General Social Survey Australia, n=12,932



Gender identity not asked

# LGBT youth homelessness prevalence

Data from service providers:

- US - LGBTQ people account for 20-40% of homeless youth [1]
- Canada – LGBTQ people account for 29.5% [2]



- [1] National LGBTQ Task Force & Policy Institute (2016). At the Intersections: A collaborative report on LGBTQ youth homelessness <http://attheintersections.org>

[www.dev.truecolorsfund.org](http://www.dev.truecolorsfund.org)

TABLE 1

## Gender differences within the youth homeless population

Gender	% (NUMBER)
Cisgender Male	57.6% (620)
Cisgender Female	36.4% (392)
Transgender	1.8% (19)
Gender non-binary	2.5% (27)
Two-Spirit	1.8% (19)
<b>Total</b>	<b>1,077</b>

- [2] Stephen Gaetz, Bill O'Grady, Sean Kidd & Kaitlin Schwan. (2016). Without a Home: The National Youth Homelessness Survey. Toronto: Canadian Observatory on Homelessness Press.

# LGBTIQ homelessness projects



**A/Prof Ruth McNair**  
**Dr Cal Andrews**  
**Dr Sharon Parkinson**  
**A/Prof Deborah Dempsey**

Caveat - intersex

[www.lgbtihomeless.org.au/](http://www.lgbtihomeless.org.au/)



FACULTY OF  
MEDICINE,  
DENTISTRY  
& HEALTH  
SCIENCES



# LGBTQ homelessness project findings

<http://www.lgbtihomeless.org.au/LGBTI-Homelessness-project-Final-report-September-2017.pdf>

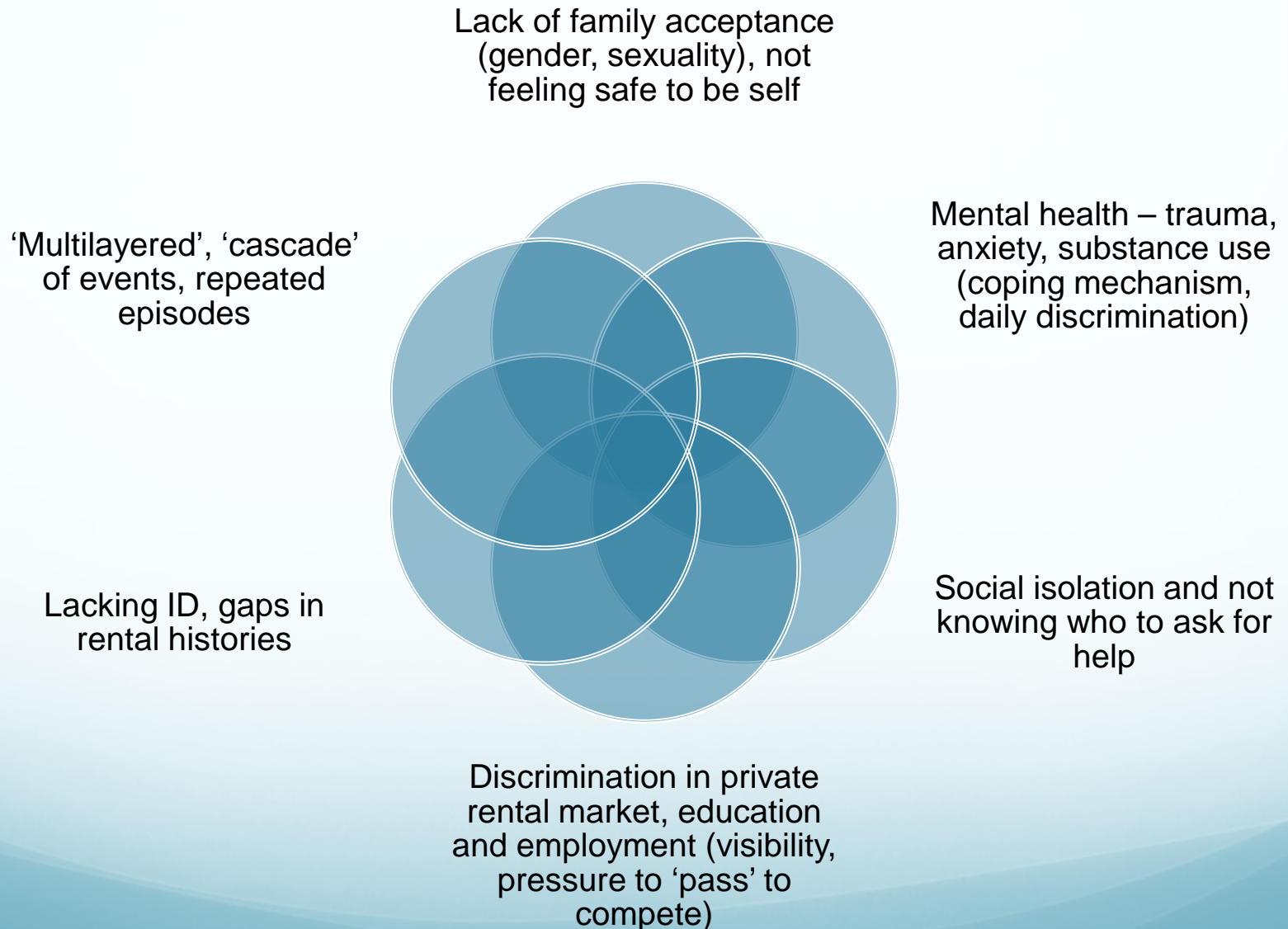


## Risk factors and pathways into homelessness

- *Structural* violence, harassment, explicit and implicit discrimination
- *Individual* vulnerability - especially family rejection and conflict, mental health, and childhood trauma and sexual assault

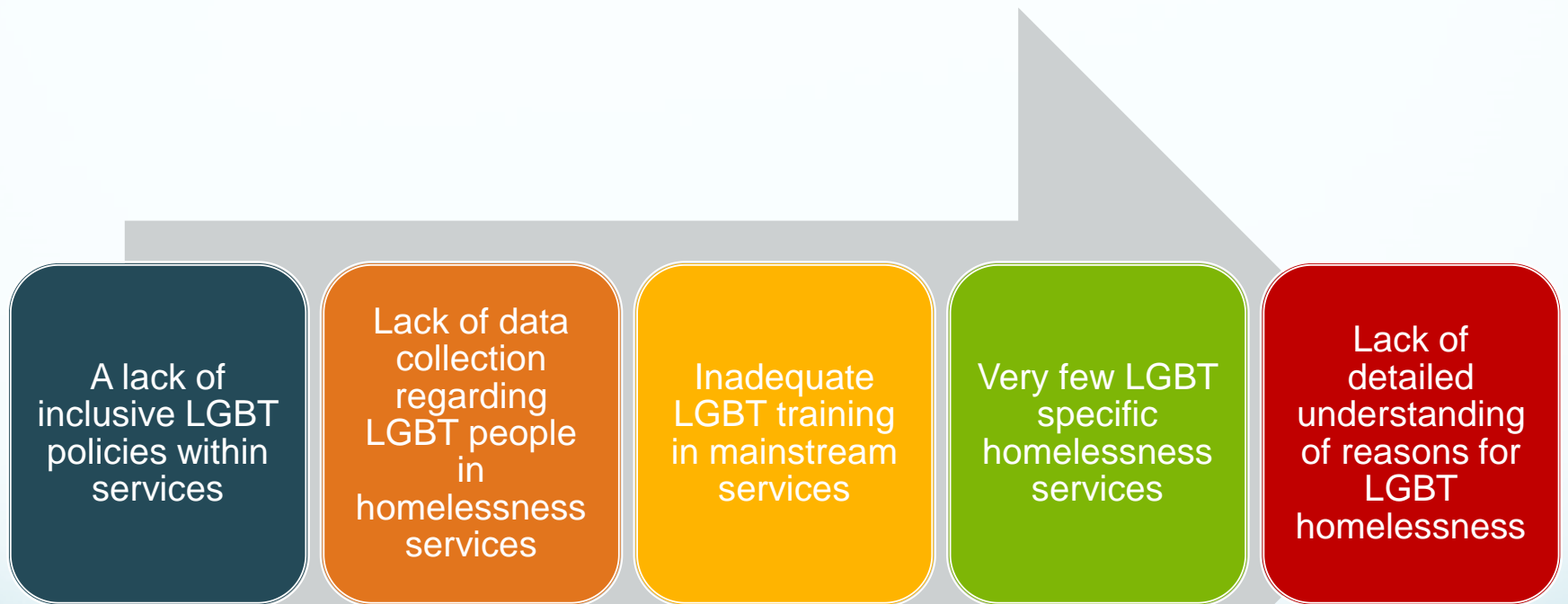
# Risk factors

Interviews with 19 homelessness services staff, and 17 LGBT people





# Structural barriers to LGBT inclusion



Reforms needed in all of these areas




# Data collection – Launch housing 2018

Pronouns	
Gender identity	She/her
	He/him
	They/them
Do you have an intersex variation?	Name only
	Prefer to self-describe (specify)

Gender identity	
Do you have an intersex variation?	Female
	Male
	Trans
Sexual orientation	Sistergirl
	Brotherboy
<b>Date of Birth</b>	Genderqueer
	Trans feminine
	Trans woman
	Trans masculine
	Trans man
<b>Identifies as</b>	Non binary
	Prefer not to say
	Prefer to self-describe (specify)

Sexual orientation	
<b>Date of Birth</b>	Asexual
	Bisexual
	Gay
	Heterosexual
<b>Identifies as</b>	Lesbian
	Pansexual
	Prefer not to say
	Questioning/Unsure
	Prefer to self-describe (specify)

**SAFE SPACE**



Launch Housing is a place where human rights are respected and people of diverse genders and sexual orientations are welcomed and supported.

**Launch HOUSING** IT'S TIME TO END HOMELESSNESS

**RAINBOW FLAG**

# National LGBTIQ inclusive practice guidelines for housing and homelessness services – in development



THE UNIVERSITY OF  
MELBOURNE

## NATIONAL GUIDELINES – EXAMPLE AREAS FOR SERVICE WORKERS

1. Respectful communication
2. Discrimination and barriers
3. Disclosure and confidentiality
4. Intersectional issues and diversity inclusion
5. Recording LGBTIQ status
6. Safe environment
7. Support, referral, and advocacy
8. Community housing and the private rental market

ADDITIONAL SECTION FOR MANAGERS  
ADDITIONAL RESOURCES FOR CLIENTS

# LGBTIQ Safe Housing Network – pilot underway 2017-2019

Pilot with 100 LGBTIQ people at risk of homelessness

Allocate case worker and peer support worker

Referrals – LGBTI inclusive:

2 pilot sites -  
Drummond St Services  
Uniting Kildonan Shepparton

Housing: – rental, social, transitional, youth foyers  
Support – mental health, AOD, education, workforce

Evaluation

Pre and post surveys with participants  
Interviews with selected participants and workers

# Thank you



E: [r.mcnair@unimelb.edu.au](mailto:r.mcnair@unimelb.edu.au)