



POLICY IMPACT STATEMENT

2015 - 16

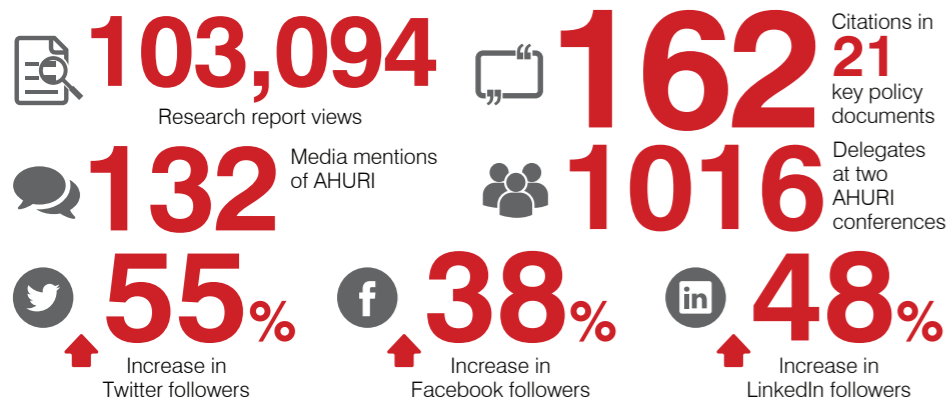
Research funded through AHURI on housing, homelessness and related urban issues contributes actively to national policy development.

We understand the importance of effective dissemination and robust engagement with our research findings and we assess the impact of our research on policy development through 6 key measures:

1. Research report views
2. Citations in key policy documents
3. Media mentions of AHURI
4. Attendance at events and conferences
5. Social media engagement
6. Case studies of policy impact

This policy impact statement provides a summary of our performance across these criteria as well as an overview of our research, events and engagement activities for FY2015-16.

POLICY IMPACT SUMMARY



POLICY IMPACT CASE STUDY

Policy impact – Affordable Housing Working Group



AHURI research has underpinned the policy development options put forward by The Australian Government's Affordable Housing Working Group (AHWG). The AHWG is considering different financing models to increase the supply of affordable housing for low income households. The group has identified a bond aggregator model based on recent AHURI research into the development of an Affordable Housing Finance Corporation.

“Through its housing and urban research, AHURI makes a critical and active contribution to the housing and policy debate... and its standard is very well recognised.”



Hon. Christian Porter MP
Federal Minister for Social Services
28 Oct 2015, National Housing Conference, Perth

KEY POLICY CITATIONS

AHURI has contributed extensively to policy development by key organisations and inquiries including:

- Inquiry into the Operations of Defence Housing Australia
- Inquiry into Accommodation for People with Disabilities and NDIS
- Productivity Commission — Housing Decisions of Older Australians
- Committee for Economic Development of Australia
- Australian Institute of Health & Welfare — Housing Assistance in Australia
- St Vincent de Paul Society — The Ache for Home
- Tasmanian Government — Tasmania's Affordable Housing Strategy

RESEARCH ON STRATEGIC POLICY ISSUES

AHURI research is delivered through a suite of inquiries which focus on strategic priorities for national housing, homelessness and related urban issues.



RESEARCH PARTNERS

AHURI research is conducted by a network of expert research partners.



EVENTS, ENGAGEMENT AND DISSEMINATION

National Housing Conference 2015

In partnership with the West Australian Housing Authority, AHURI convened the National Housing Conference in Perth – the single largest cross-sectoral event in Australasia for the affordable housing industry.



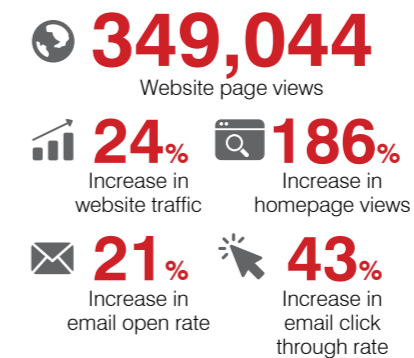
My way home: competition and choice in human services

AHURI convened the first in a new series of one-day conferences focussing on a major policy issue. Held in Melbourne, the conference examined competition and choice in the human services sector and attracted 152 delegates from across Australia.



AHURI website and AHURI News

AHURI's new website was launched in March 2016 to further enhance engagement and dissemination. As part of AHURI's commitment to supporting policy development, the site includes in-depth analysis on selected key policy topics for government and the practice community as well as news updates with the latest findings from AHURI.



“We value the research and work that is done by AHURI because it feeds into so much of our thinking, and helps us with that thinking.”



Hon. Brad Hazzard MP
NSW Minister for Social Housing
13 Apr 2016, AHURI Conference, Melbourne

CONTACT DETAILS

Australian Housing and Urban Research Institute

Level 1
114 Flinders Street
Melbourne Victoria 3000

T +61 3 9660 2300
E information@ahuri.edu.au

ahuri.edu.au
ACN 090 448 918



twitter.com/AHURI_Research



facebook.com/AHURI.AUS



Australian Housing and Urban Research Institute