



National Housing
Conference 2022

Design quality of higher density housing

Kerstin Thompson

Kerstin Thompson Architects

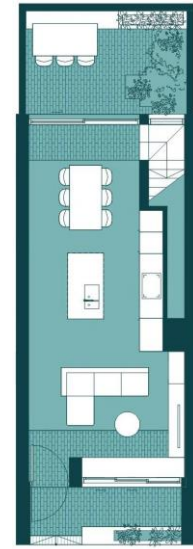


6 CONUNDRUMS FOR THE ARCHITECTURE OF SOCIAL HOUSING

KERSTIN THOMPSON
_KERSTINTHOMPSONARCHITECTS

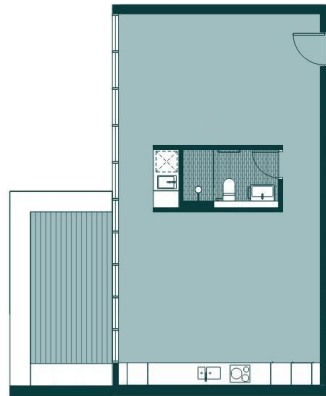
1.

Design for **all** or design for **no-one**?



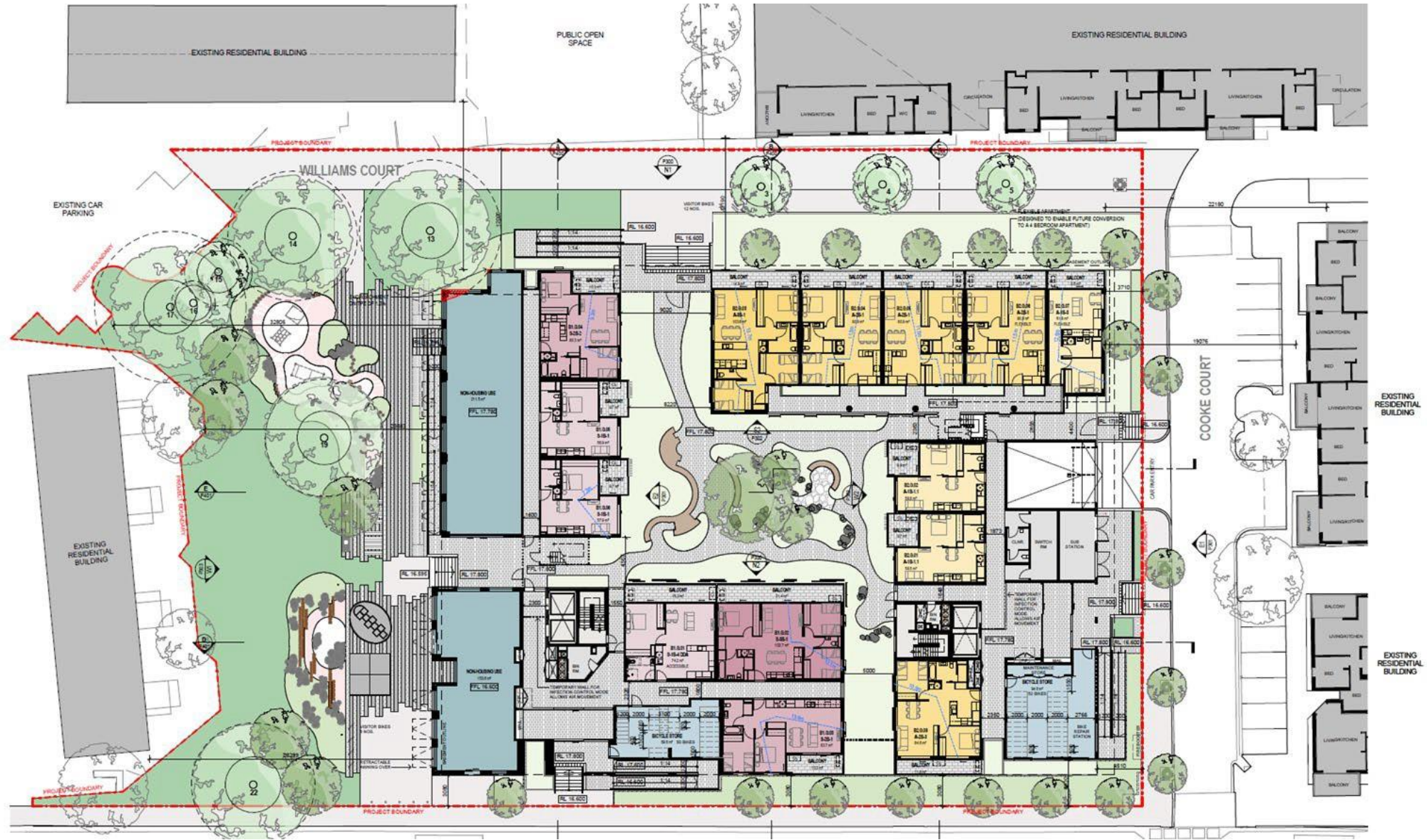
Ground

First Floor



Balfe Park Lane

Choice vs Allocation



Wave 2: Elizabeth Street, North Richmond



Wave 2: Elizabeth Street, North Richmond

2.

Is architectural neutrality even possible and is it appropriate in multi-cultural Melbourne?



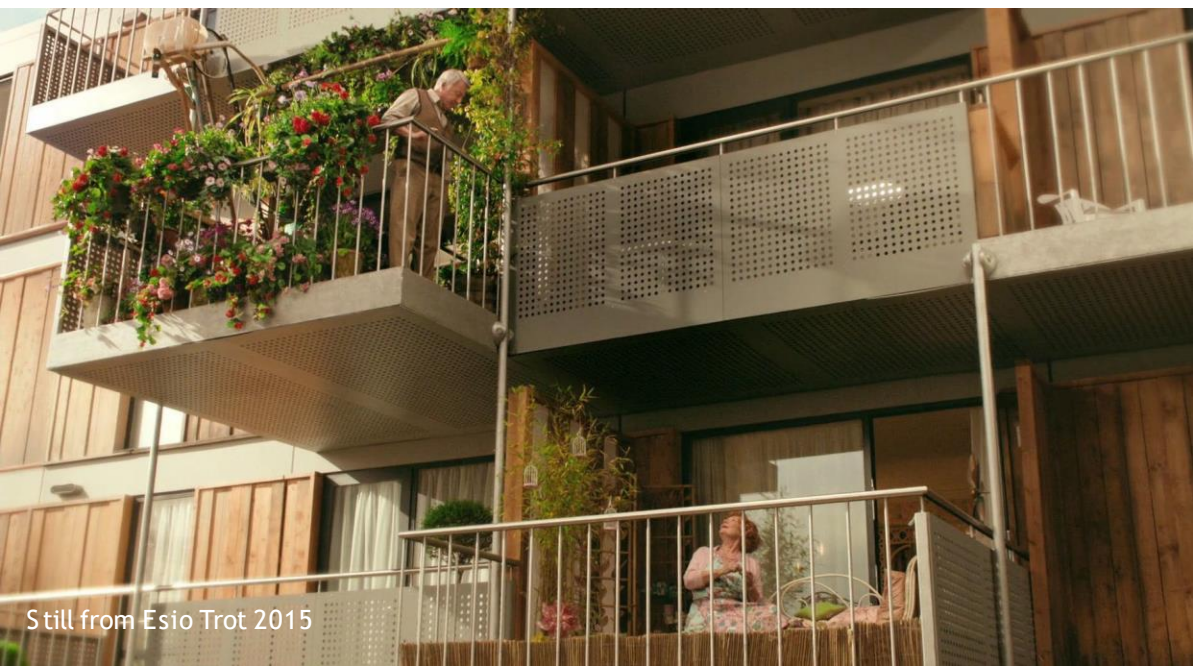
Fitzroy Workers Cottage



Brunswick Balustrades



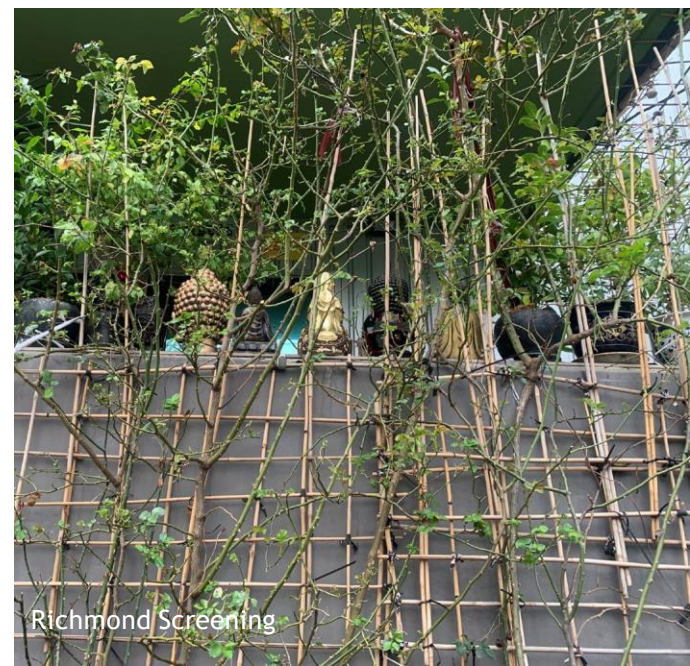
Richmond Screening



Still from Esio Trot 2015



Richmond Screening



Richmond Screening



Wave 2: Elizabeth Street, North Richmond



3.

Romance of the commons...
for whom?



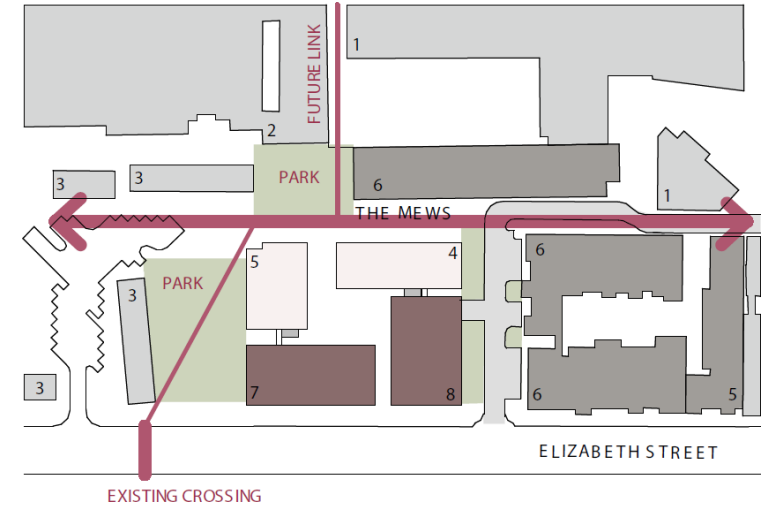
Nightingale Brunswick by Breathe



Arlington by Athfield Architects



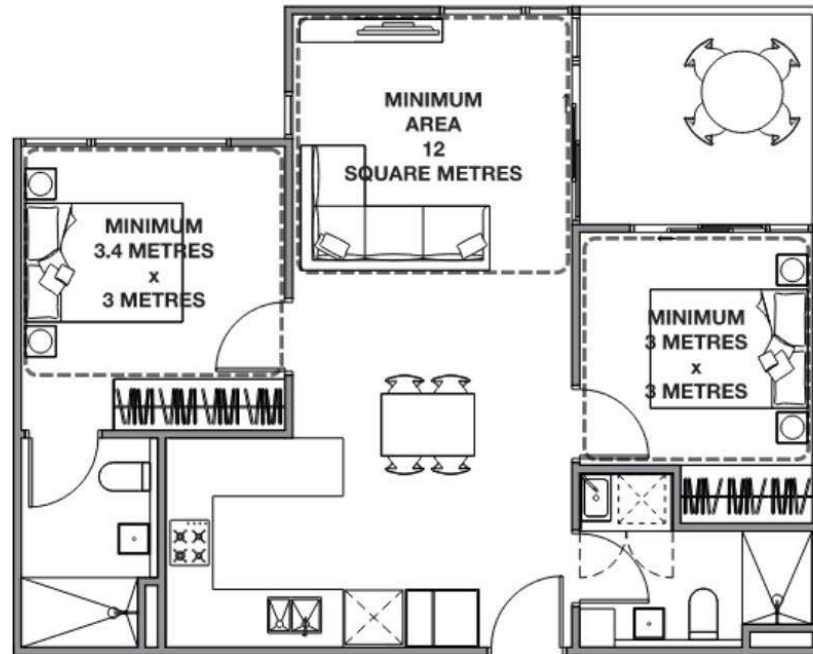
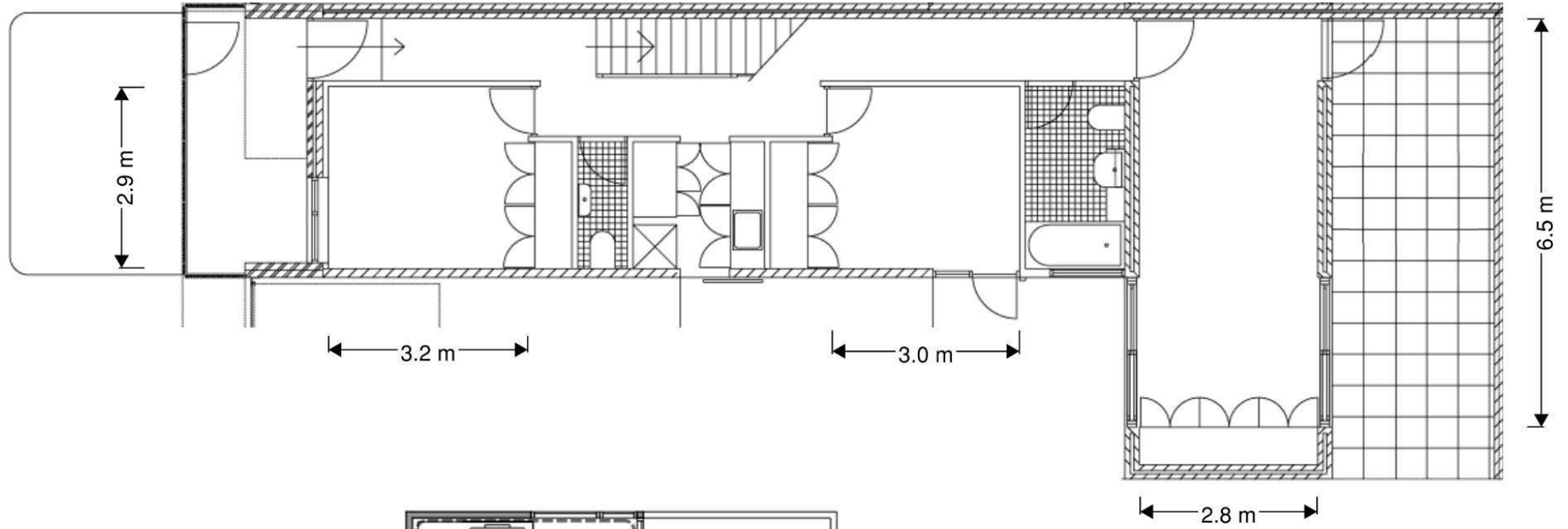
Balfe Park Lane



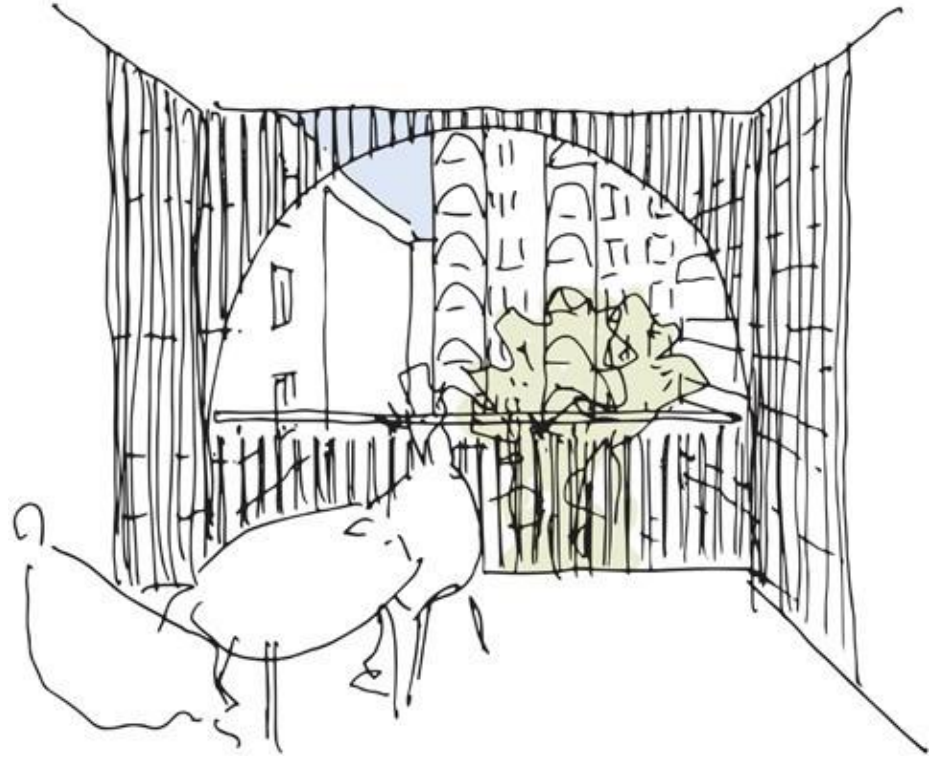
4.

Regulatory formulas...

what of site and contextual
responsiveness + innovation?



Napier Street by KTA, BADS minimum room dimensions guidance 2017



Wave 2: Elizabeth Street, North Richmond

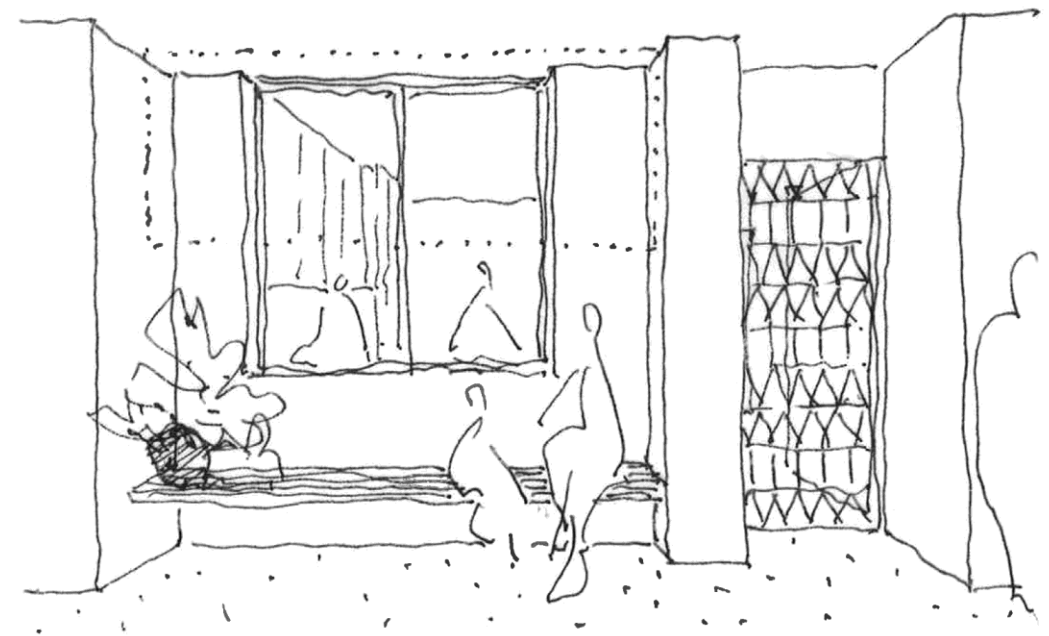


5.

Beyond the 'necessary'...
what makes for homeliness?

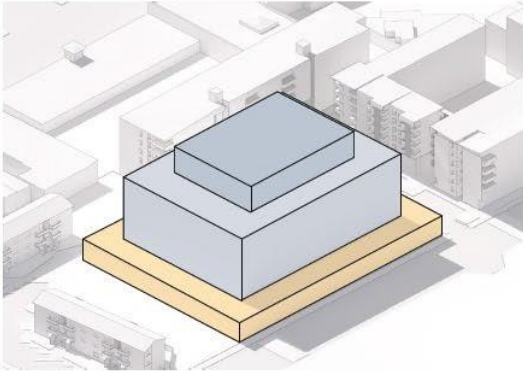


Napier Street

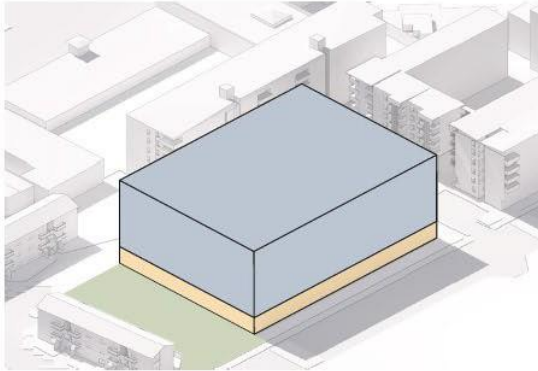


“ Generosity is absolutely essential in any act of architecture. We cannot just do the minimum, we have to really think of how to do the maximum.”
Jean Philippe Vassal

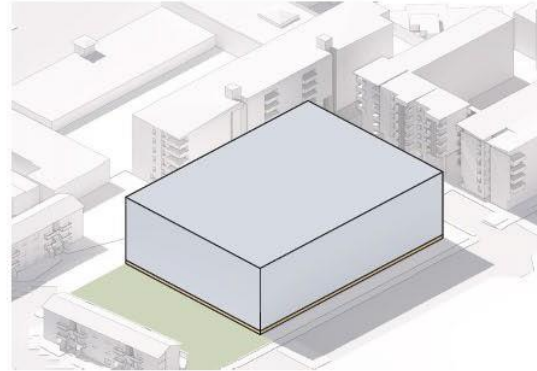
MASSING PROCESS



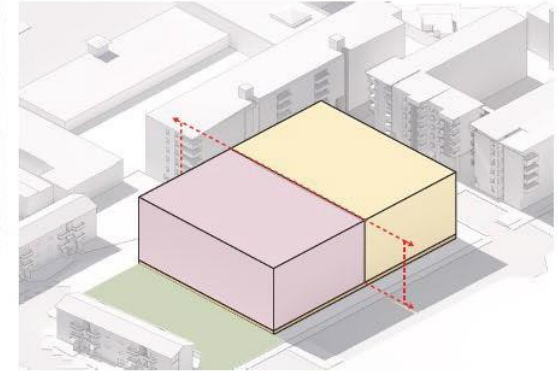
1A. PODIUM MASSING
Business as usual



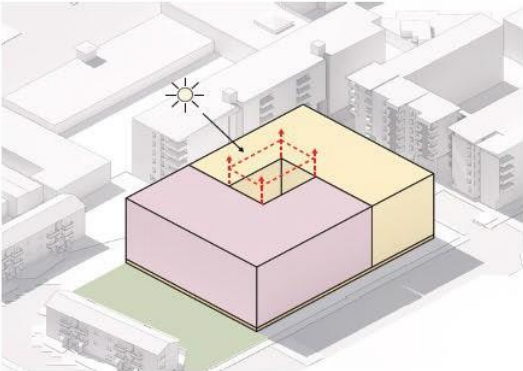
1B. SINGULAR MASSING
Form Consolidated



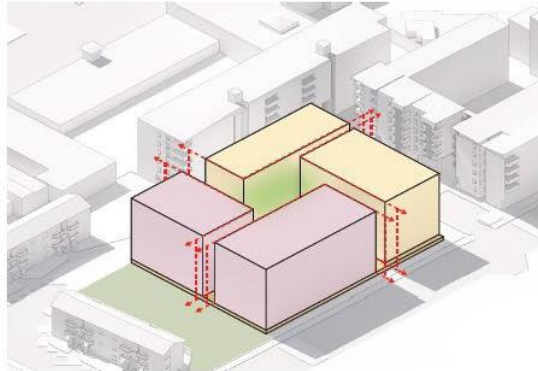
2. HALF BASEMENT
Parking pushed to basement to activate street frontages



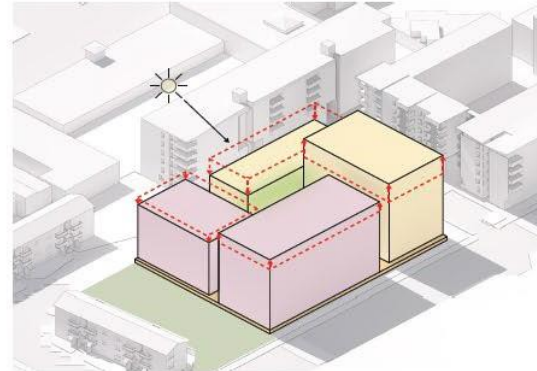
3. TENURE DIVISION
Mass split into briefed cohorts



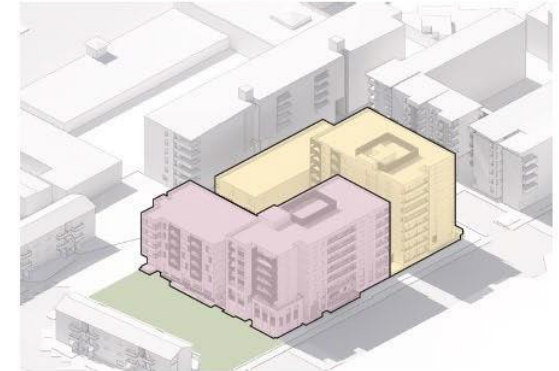
4. COURTYARD
Massing arranged at building edges to create private courtyard and increase solar aspect



5. OPENINGS
Perimeter volume further divided to provide mass visibility variety of scales



6. SOLAR ACCESS
Heights adjusted to maximise solar penetration



7. INTERFACE RESPONSE
Facade articulated to respond to specific interfaces

6.

Repetition for efficiency and
for equity...

wherein lies character, points of
attachment?



Golden Mile Complex
by William Lim, Tay Kheng Soon, Gan Eng Oon



Wave 2: Elizabeth Street, North Richmond



Napier Street