

Staying home: supporting ageing in place

Dr Matthew Hutchinson

Peddle Thorpe



My Space, Your Space, Our Space

How co-located housing might help us age in place for longer

Dr Matthew Hutchinson

2nd March 2022



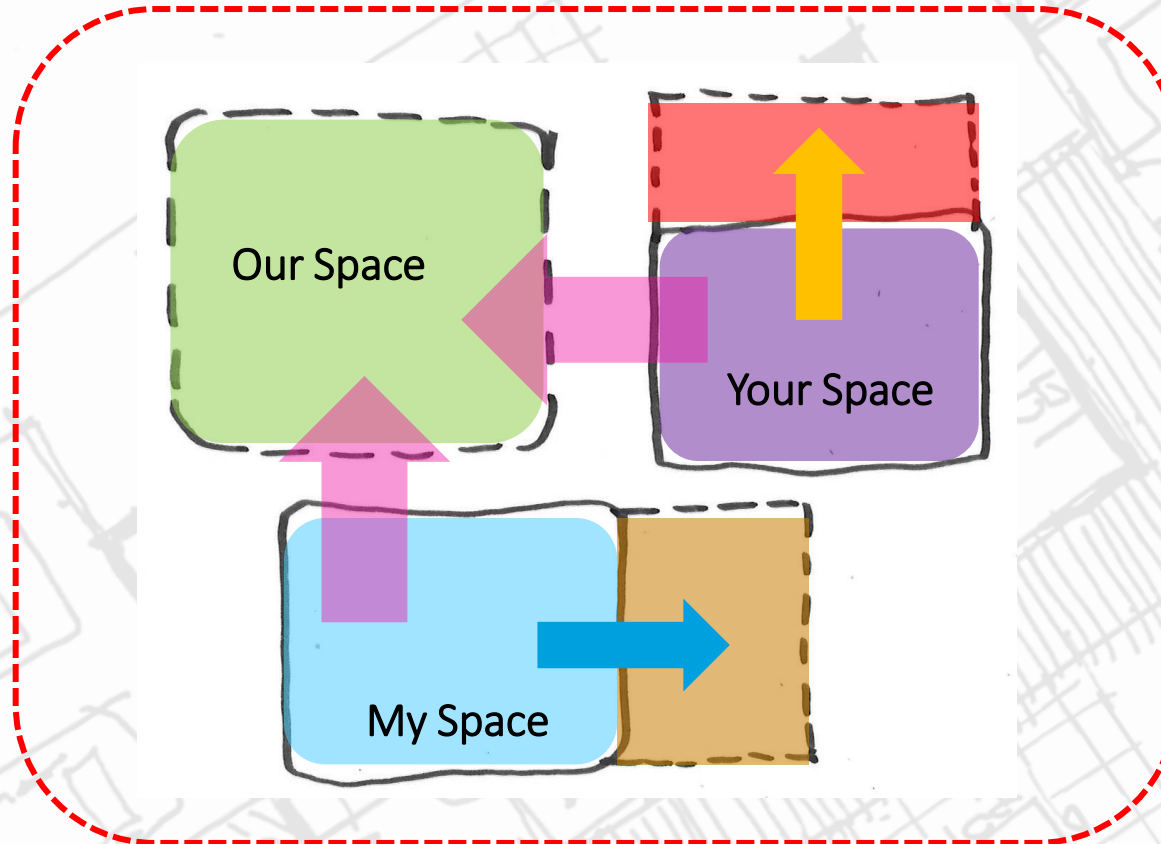
PEDDLE THORP
architecture | interiors | health | planning

Content – Learning Outcomes

- The presentation title introduced
- Context of the presentation explained
- The housing concept framed, developed and described
- Its potential application discussed



My Space, Your Space, Our Space



Context

- The Royal Commission into Aged Care Quality and Safety (October 2018 – March 2021)
- The PhD Research –“Housing for an Ageing Australia: What Next?” (2019)
- COVID 19 (Feb/March 2020 – Ongoing)
- Housing Crisis (For sometime and getting worse)



Context

› Recommendations

- **Recom#45 - Improving the design of aged care accommodation**
 - Government should guide the design of residential aged care accommodation
 - Through National Aged Care Design Principles and Guidelines
 - Focus on Dementia Design Principles
- **Recom#46 - Capital grants for 'small household' models of accommodation (1 Jan 2022)**
 - Upgrade existing or new build
 - Commentary around the benefits of small household care models



The Royal Commission into Aged Care Quality and Safety

“Access to accommodation in which people can age and, as necessary, receive aged care services needs to be improved. That is so regardless of whether the accommodation is owner-occupied, privately rented, social and affordable housing, or residential aged care. Older people living in unsuitable housing face greater risk of falls, injury and immobility, and the prospect of unanticipated or premature entry into residential aged care.” (Royal Commission into Aged Care Quality and Safety, Final Report Volume 3a, p. 232)



The Royal Commission into Aged Care Quality and Safety

“People’s accommodation should, where possible, cater to their changing needs. Accommodation with accessible and dementia-friendly design features will allow older people to remain in familiar surroundings if they become frail or develop symptoms of dementia. Accommodation located close to shops and other amenities is not only convenient but may also help people maintain social engagement with the local community.” (Royal Commission into Aged Care Quality and Safety, Final Report Volume 3a, p. 221)



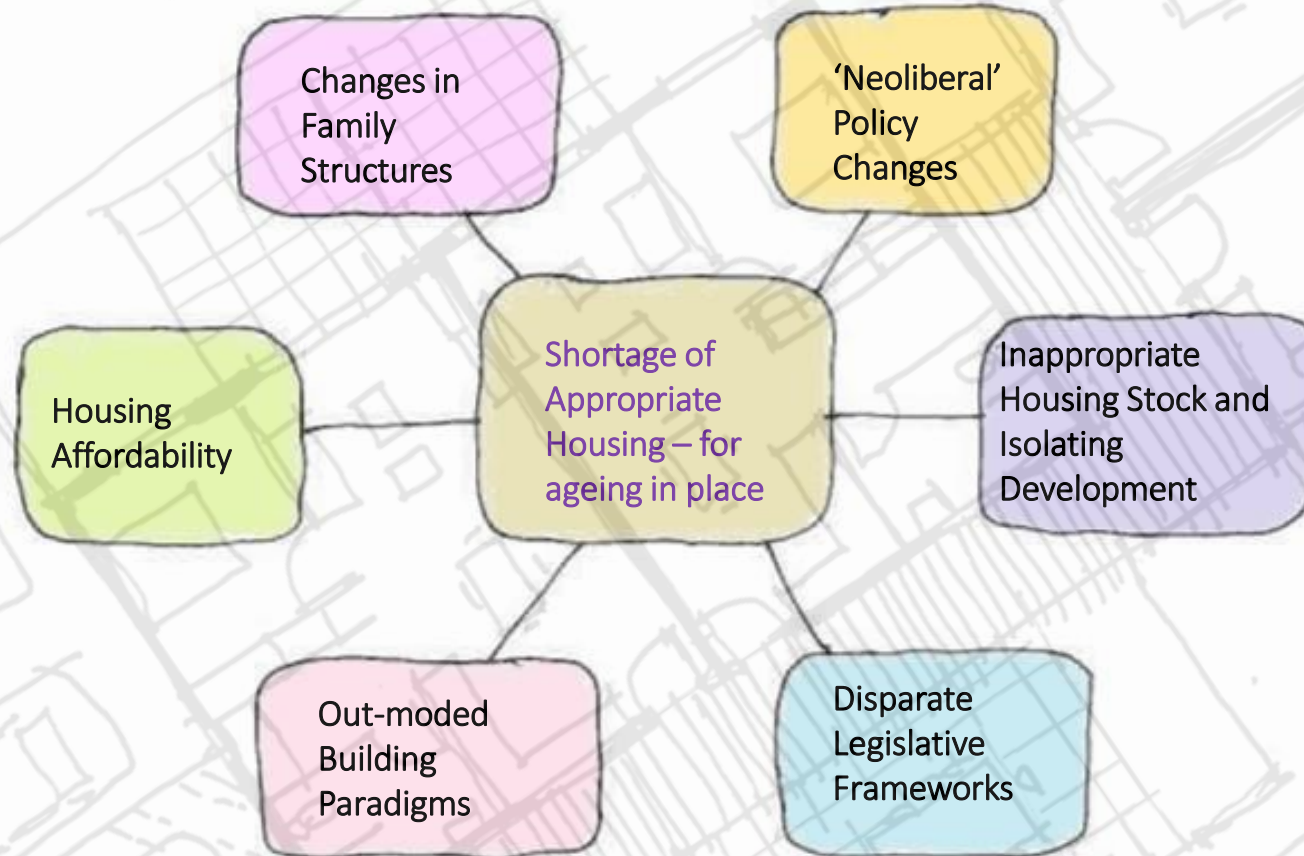
The Royal Commission into Aged Care Quality and Safety

“We note that there is currently no discernible connection between the Australian Government aged care program and any Australian Government or State or Territory Government housing program. This must change.” (Royal Commission into Aged Care Quality and Safety, Final Report Volume 3a, p. 233)

“There is a distinct need for coordinated intergovernmental policy, planning and action relating to housing and accommodation for Australia’s ageing population. As a matter of priority, governments should work together to increase accessible housing, including private rental housing and social and affordable housing, for the ageing population.” (Royal Commission into Aged Care Quality and Safety, Final Report Volume 3a, p. 231)



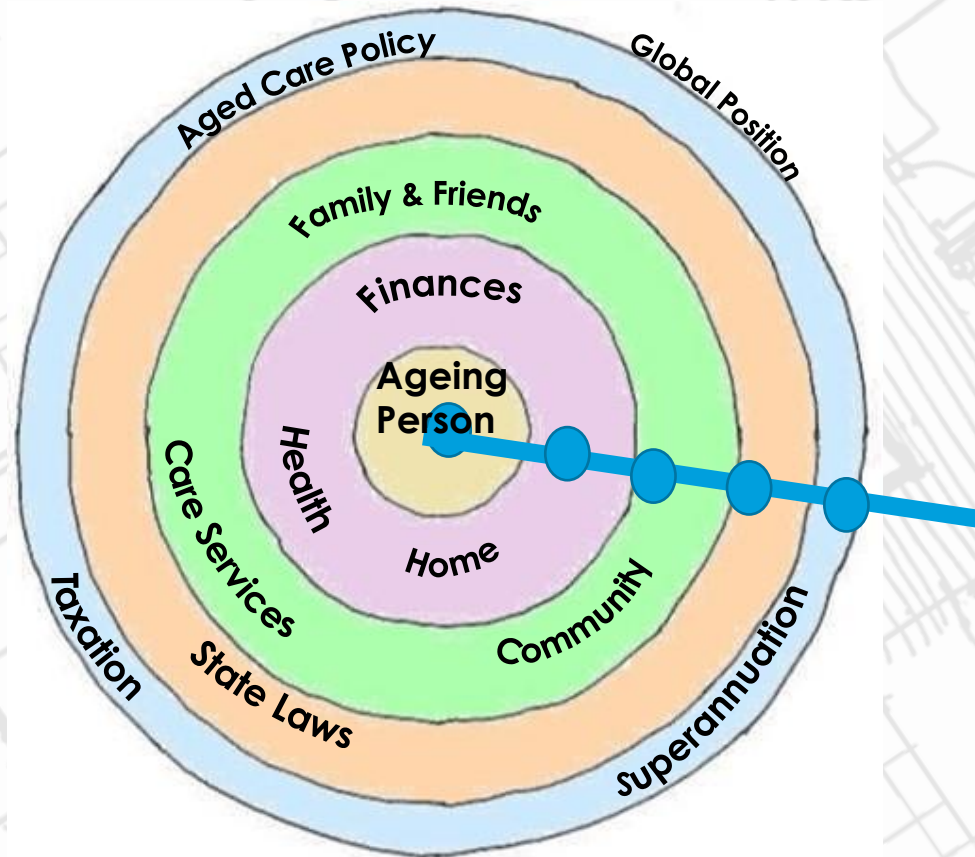
The PhD Research - “Housing for an Ageing Australia: What Next?”



The PhD Research

Ecological Theory (Bronfenbrenner, 1979)

The investigative lens –
ecology of housing and
support



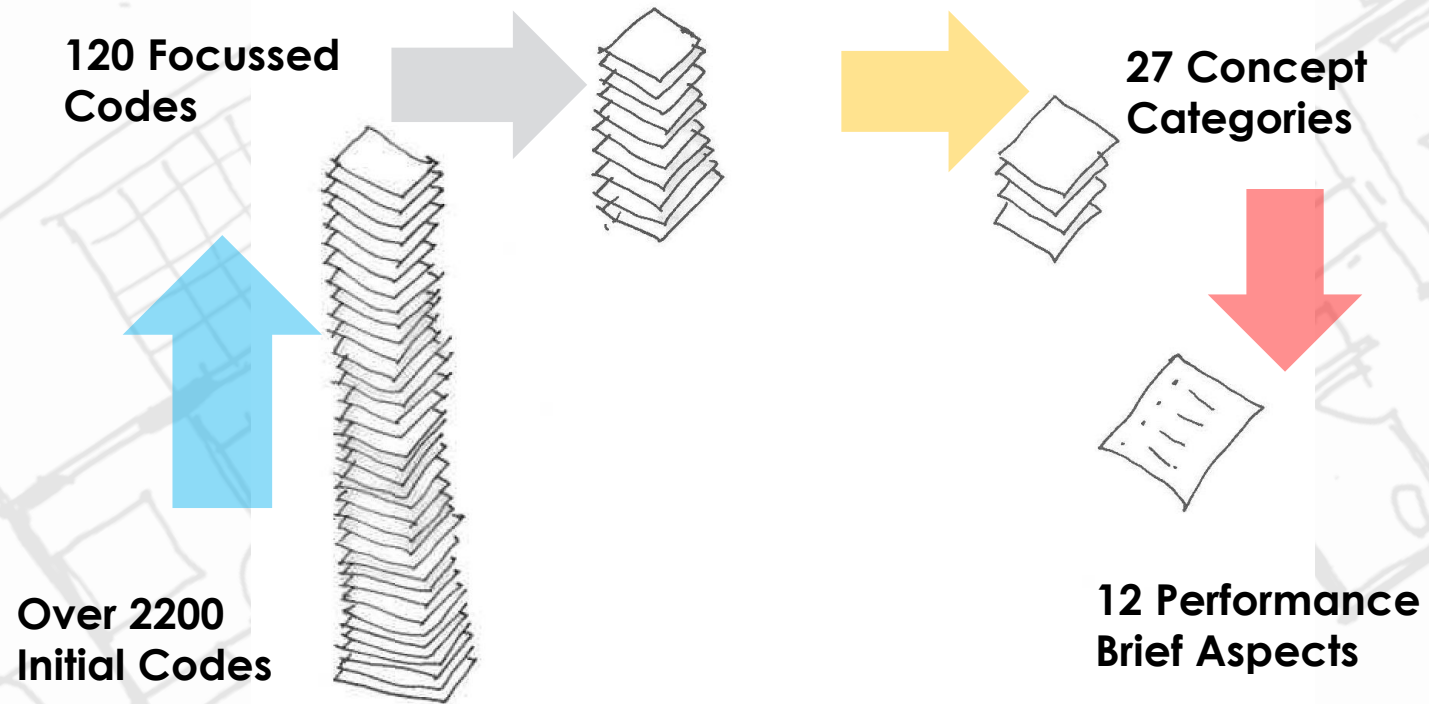
Participants from
various positions
within the ecology

(Hutchinson, 2019)



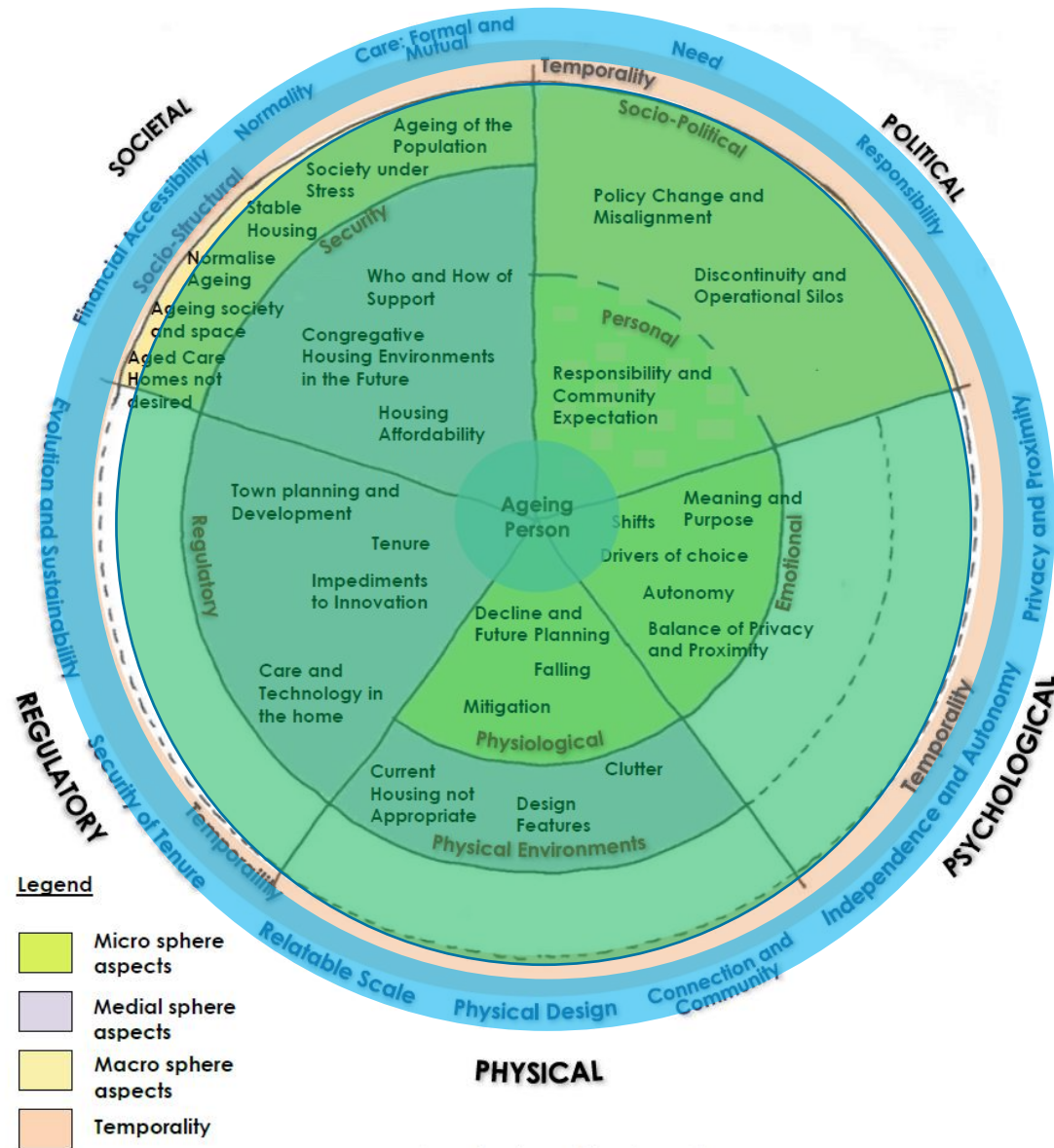
PEDDLE THORP
architecture | interiors | health | planning

The PhD Research



based on (Hutchinson, 2019)





- Psychological
- Physical
- Regulatory
- Societal
- Political

The findings – Operational Areas

(Hutchinson, 2019)



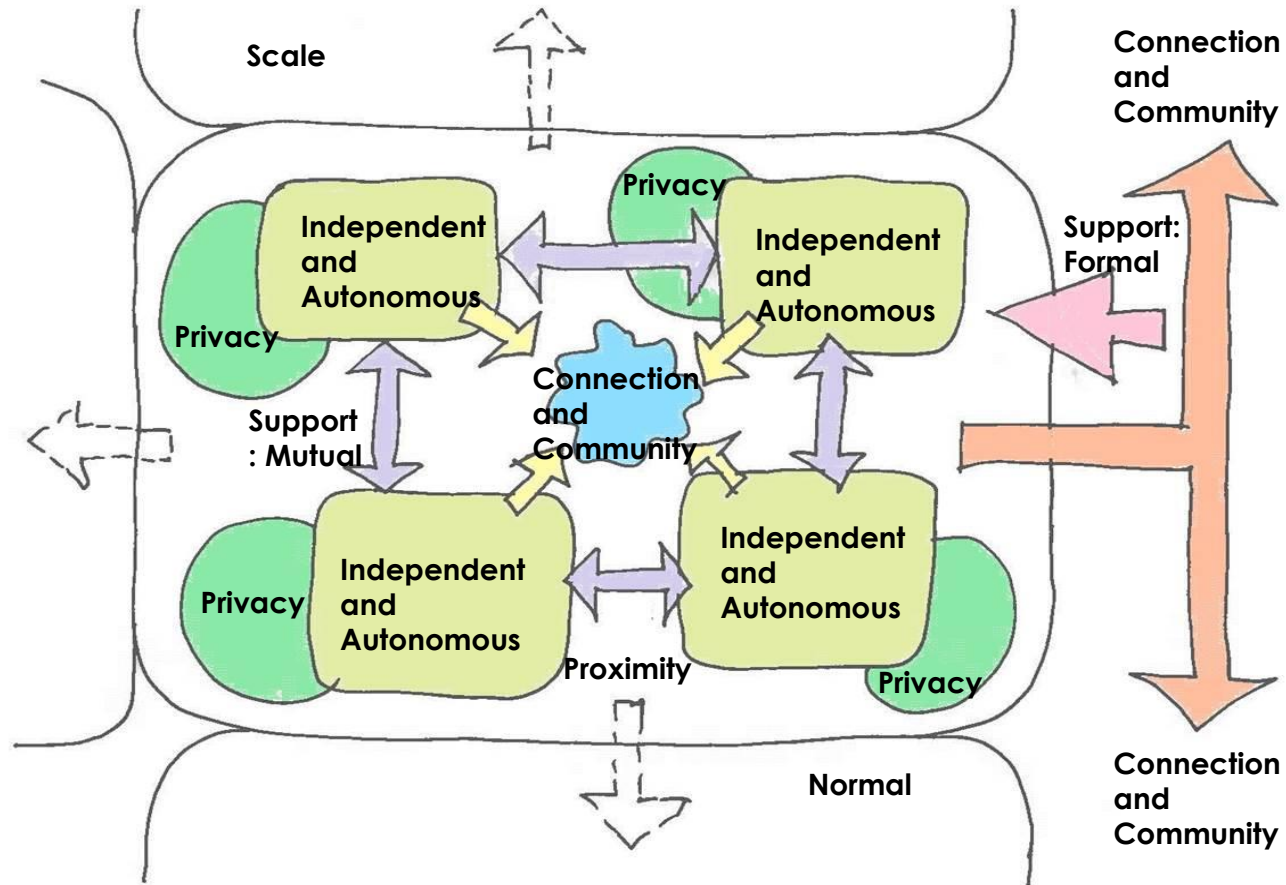
The PhD Research

12 Performance Briefing Principles

- Need
- Normality
- Autonomy
- Connection and Community
- Proximity and Privacy (Domain)
- Care: Formal and Mutual
- Relatable Scale
- Physical Design
- Evolution and Sustainability
- Financial Accessibility
- Security of Tenure
- Responsibility



The PhD Research



(Hutchinson, 2019)



A Housing Concept

Reduced car-spaces with dedicated care providers space

Located within practical walking or mobility scooter distance of public transport, shopping and services

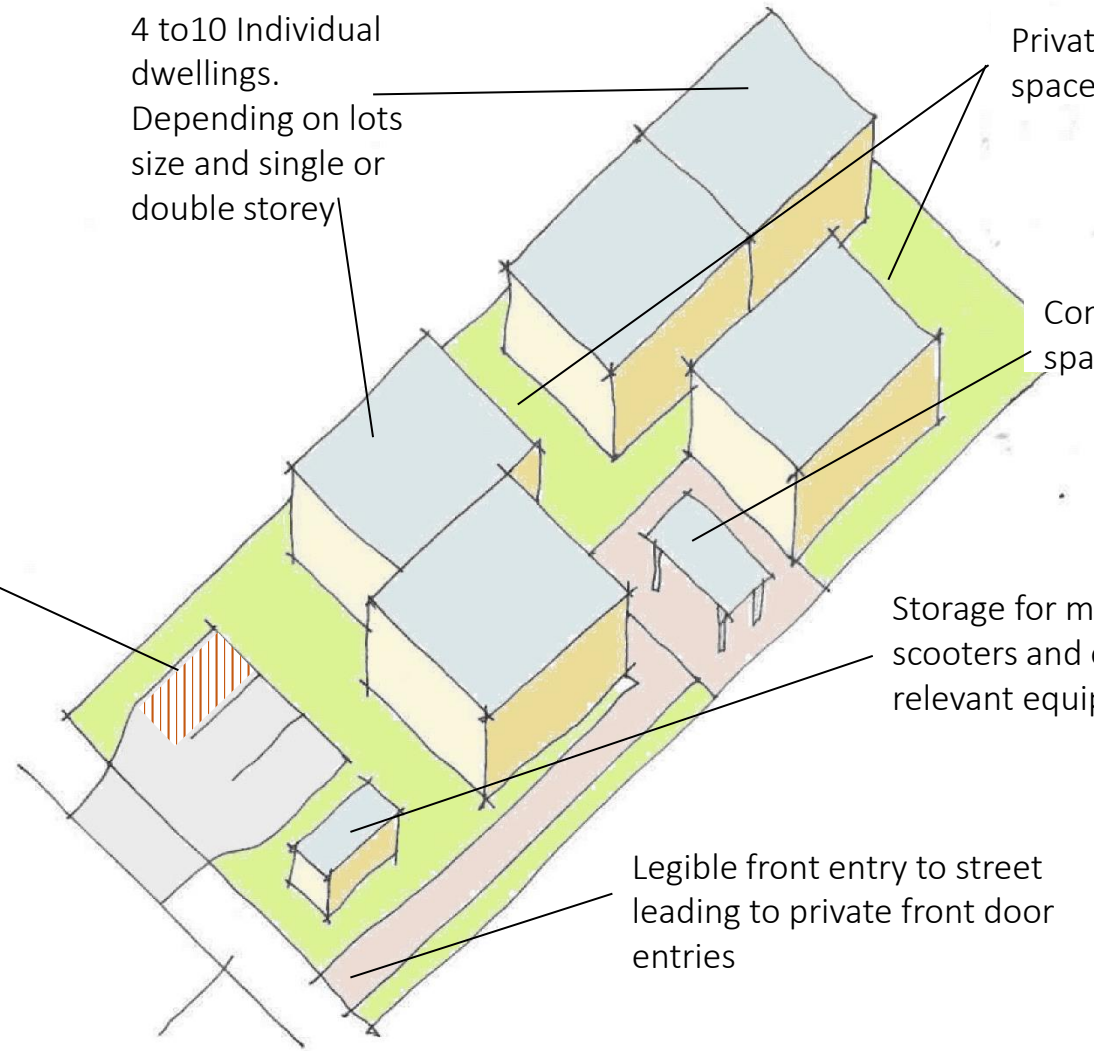
4 to 10 Individual dwellings. Depending on lots size and single or double storey

Private outdoor spaces

Communal outdoor spaces

Storage for mobility scooters and other relevant equipment

Legible front entry to street leading to private front door entries

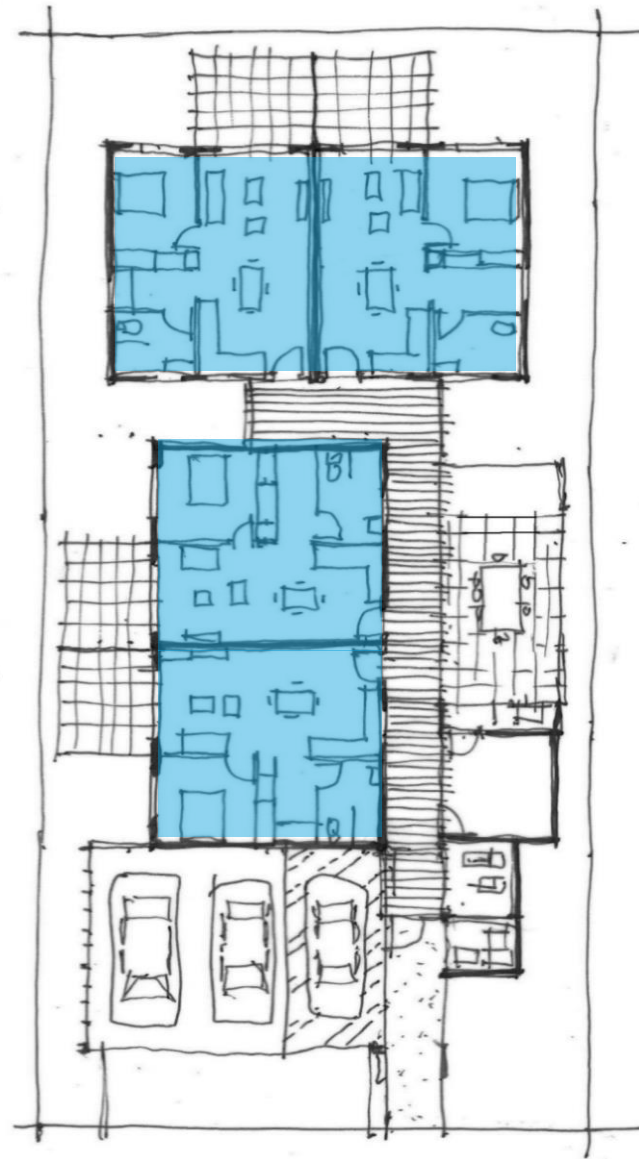


(Based on Hutchinson, 2019)



A Housing Concept

- Individual Dwellings



A Housing Concept

- Individual Dwellings



A Housing Concept

- Individual Private Spaces



A Housing Concept

- Communal Spaces



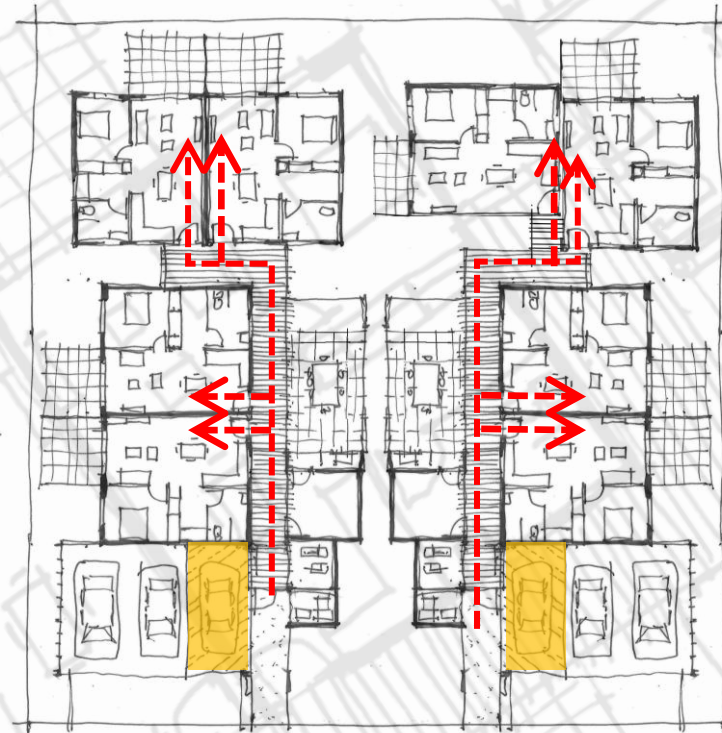
A Housing Concept

- Corporate Communal Spaces
 - Increase Social connections



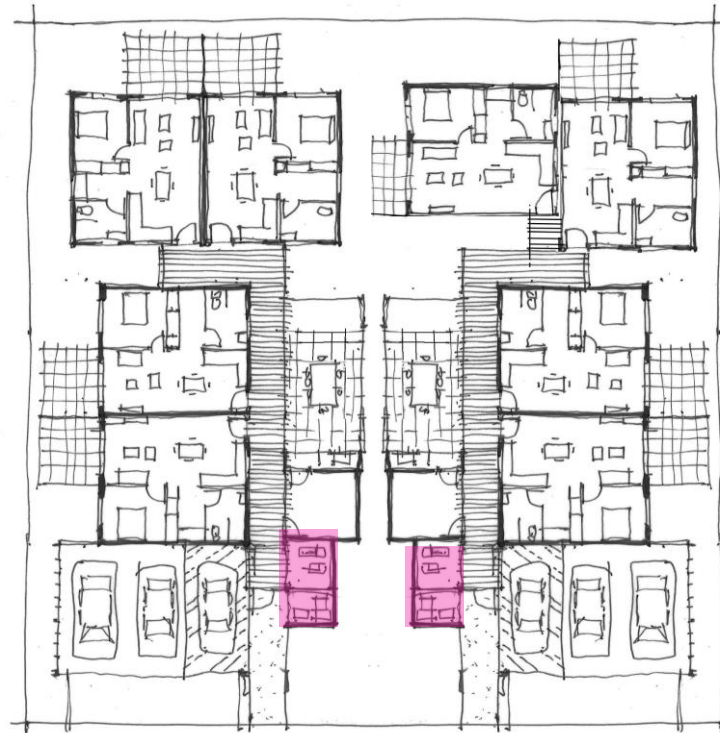
A Housing Concept

- Dedicated Carer's Car Space



A Housing Concept

- Storage for Mobility aids



A Housing Concept

- Extended Development
 - Multiple sites within the suburb/ region/ Locality
 - Intergenerality in the community
 - Efficiency in formal service delivery



Parting Thoughts

Why might this conception of housing have some application?

- Could potentially address real need and choice
- Could possibly be achievable financially
- Could possibly assist with loneliness
- Could possibly be scalable
- Could possibly be realised through intentional and co-ordinated response from private and public partners, respond to Royal Commission call



Thank you

