

# Strange Bedfellows and the Usual Suspects



# Rental Affordability Index

## History and Partnership

AHURI National Housing Conference 2022



# What is the RAI?

Collaboration between SGS, National Shelter, Beyond Bank, and Brotherhood of St Laurence

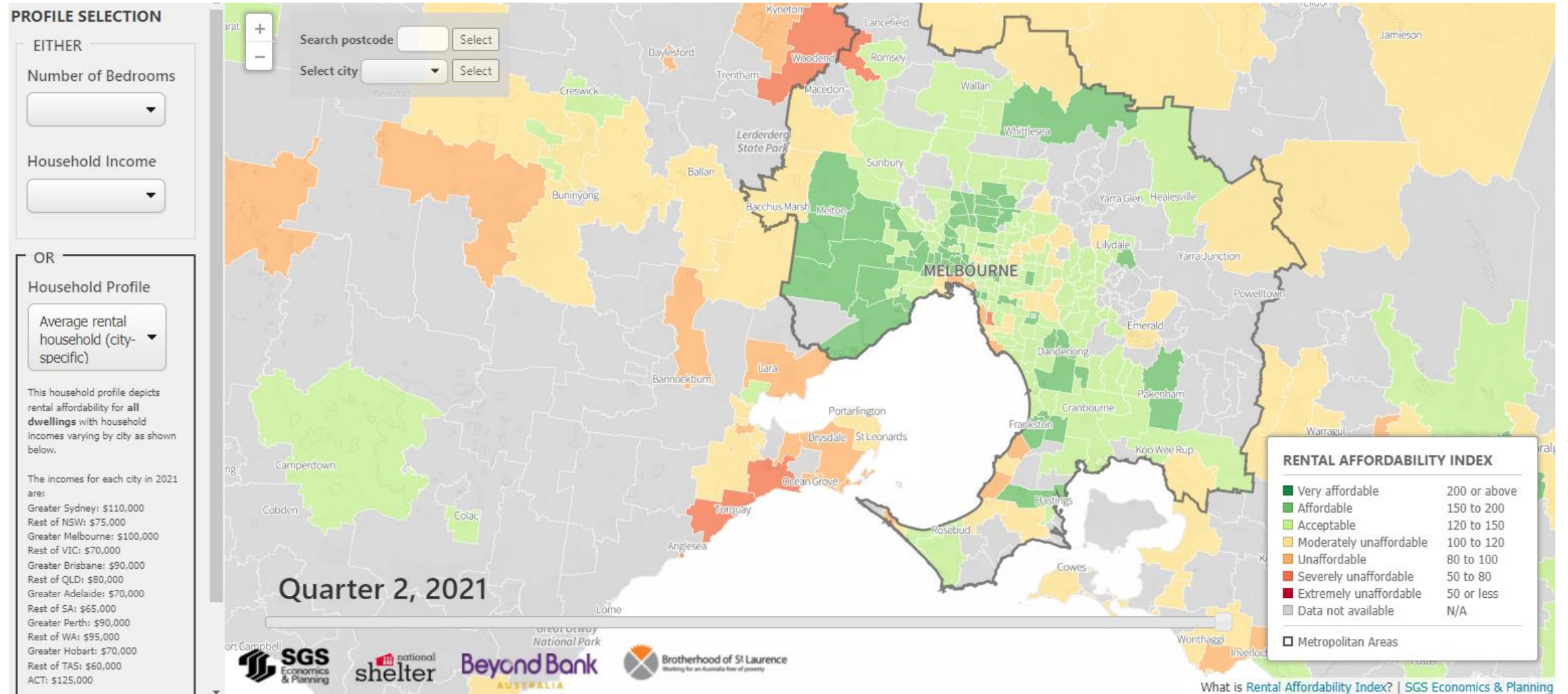
- Annually released since 2015
- Reports and an interactive map

The RAI is a price index: rental prices relative to income levels of different household types

<https://www.sgsep.com.au/projects/rental-affordability-index>



# What is the RAI?



# A brief history of RAI

2015

RAI inception, with method review committee including:

- Adrian Pisarski (National Shelter)
- SGS Economics and Planning
- Greg Peel (CSB)
- Dr Own Donald (AHURI)
- Prof Judith Yates (University of Sydney)
- Prof Hal Pawson (UNSW)
- Saul Eslake



[SGSEP.COM.AU](http://SGSEP.COM.AU)

2017

Method refinement - Household profiles added

2018

More significant media engagement – Case studies



2019

Growing advocacy - Parliamentary event

2021

Regional and COVID impact focus



# Why was the RAI developed?

To draw attention to the housing affordability crisis – which is particularly severe in the rental sector

Influence public policy through multiple avenues

- Advocacy work by National Shelter, BoSL, and others
- Resource to researchers and government policy makers through AURIN and AIHW
- Policy advisory impact via SGS' work
- Draw media and public attention to rental affordability issues



## Canberra

P: +61 2 6257 4525

E: [sgsact@sgsep.com.au](mailto:sgsact@sgsep.com.au)

## Hobart

P: +61 3 6264 3116

E: [sgstas@sgsep.com.au](mailto:sgstas@sgsep.com.au)

## Melbourne

P: +61 3 8616 0331

E: [sgsvic@sgsep.com.au](mailto:sgsvic@sgsep.com.au)

## Sydney

P: +61 2 8307 0121

E: [sgsnew@sgsep.com.au](mailto:sgsnew@sgsep.com.au)



Certified



Corporation

