

Acknowledgement of Country

**Home
Stretch**
WA



We respectfully acknowledge the Yagara and Turrbal people as the Traditional Custodians of Meeanjin (Brisbane).

We pay our respects to their strength, cultural resilience and the Elders past and present.

Why Home Stretch...?

Overwhelming evidence base to extend support from 18-21, homelessness halved, education rates doubled...

Anglicare Victoria

EXTENDING OUT OF HOME CARE TO 21 YEARS

SUMMARY OF THE AUSTRALIAN SOCIOECONOMIC COST BENEFIT ANALYSIS

An accompanying document of the Socioeconomic Cost Benefit Analysis by Deloitte Access Economics

April 2018
Report commissioned by Anglicare Victoria

BETTER TOMORROWS

CONTINUING CARE IN AUSTRALIA:

AN ANALYSIS OF STATE AND TERRITORY LEGISLATION AND POLICY

Commissioned by Anglicare Victoria
Report prepared by Susan Skelton
October 2018

Commissioned by the Department of Social Work and Disability Services
October 2018

HOME STRETCH

Continuing care of young care leavers

HOME STRETCH

A FEDERAL AND STATE COST BENEFIT ANALYSIS

EXTENDING CARE TO 21 YEARS

DELOITTE ACCESS ECONOMICS COST BENEFIT ANALYSIS
JULY 2018

A \$350m national commitment

WE'RE ABOUT
HUMANS.



PAUL MCDONALD

Chair Home Stretch &
CEO Anglicare Victoria

IMPLEMENTATION
IS KEY!

WE'RE AT THE END of
the beginning!



Home Stretch WA...

Is a promise to young people and Aboriginal Communities



**Home
Stretch**
WA

= Co-designed, tested and developed
BY or WITH Young People

Nitja Nop Yorga Ngulla Mia...



Home Stretch WA – A Community of Practice



ALBANY
YOUTH SUPPORT
ASSOCIATION



BLOODWOOD TREE
ASSOCIATION Inc.



Yorganop

ROBE RIVER
KURUMA
ABORIGINAL
CORPORATION RNTBC
ICN 7612



MISSION
AUSTRALIA



South West
AMS
Aboriginal Medical Service



MARRA
WORRA
WORRA
ABORIGINAL
CORPORATION

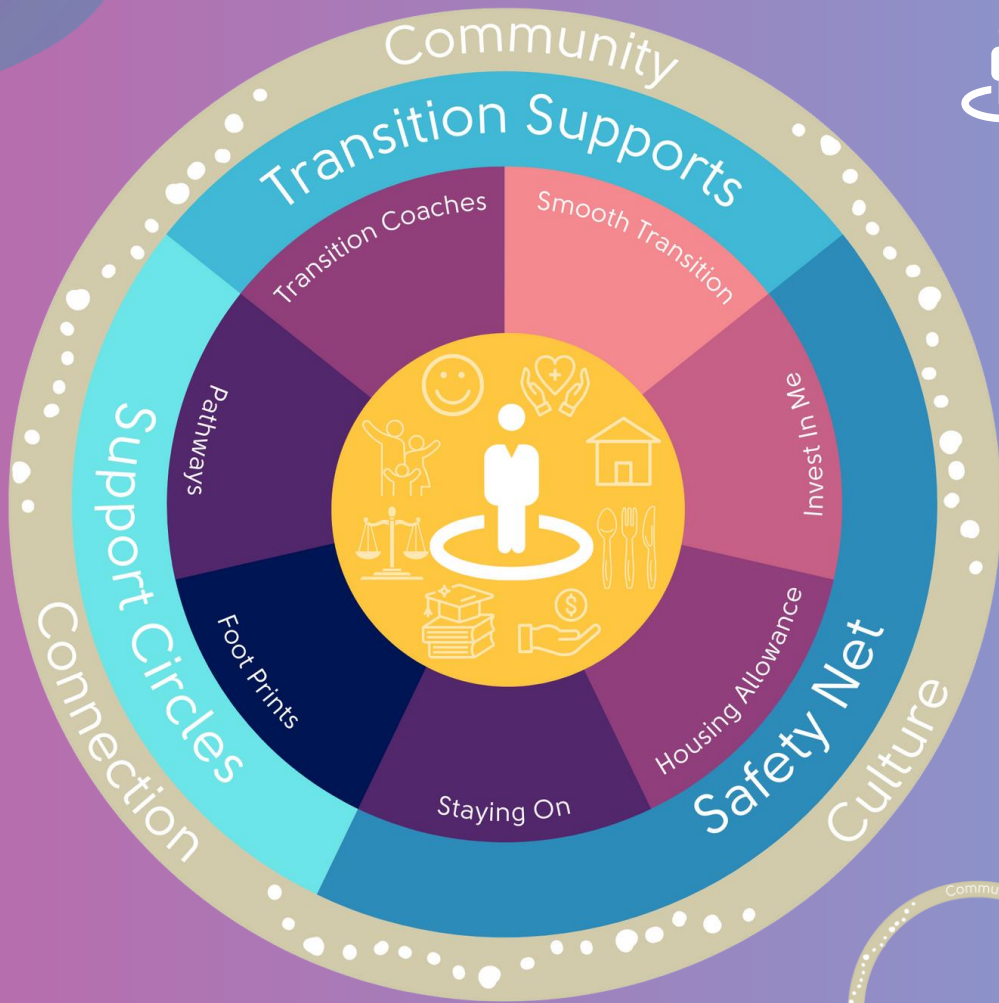


Streeties
Empowering Aboriginal Youth & Families



Government of Western Australia
Department of Communities

Home Stretch WA Model



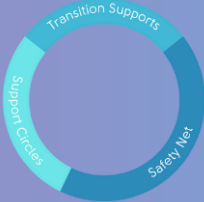
Young people are at centre of support. Everyone is treated as an individual



Support or connection is offered in all areas of life



Support is delivered in specific ways (Practice Approaches).



Home Stretch WA focuses on 3 key elements of support



Home Stretch WA greater purpose is to connect young people with their community and culture.

Independence VS Interdependence

We often talk about **independence** as the goal for young people leaving care....

It's the wrong goal for a system

Will it end homelessness for care leavers?

Around 1 in 3 (30%) young people experience homelessness at some stage within their first year after leaving care (37% of these for 6 months or more) (McDowall 2020).

Care Leavers are still significantly over-represented in By Name List capturing those experiencing chronic homelessness.

Pathway to Safe & Stable Housing

WHERE DO I WANT TO LIVE??

NOW



- ANYWHERE... — FRED...
- NEAR MUM...
- ↳ WITH MUM.

- = NOW WITH FRIENDS
- + CHILL
- + NEAR TRANSPORT
- + \$50 pw.
- CRACKHEADS...
- NO PRIVACY
- DISTRACTIONS...
- NO FOOD.

WHAT'S NEXT? → BOND LOAN ←
— GET JOB... RENT ASST

Priority LIST ✓

RENT LESS THAN "30% OF INCOME AFTER TAX"

→ CL 660 ptn. PER FOURNIGHT. LOX 66 x 3 - 198

30% = 198 ptn.

= \$99 pw rent... PER WEEK.

5 YEARS

HOMESWEET? — CHEAP, BUT LOW INCOME
PRIVATE RENTAL?

↓
BETTER MONEY. CHOOSE WHERE I LIVE

- * AWAY FROM FRIENDS.
- * APARTMENT?
- * GARDEN - GET A DOG.
- NEGATIVE INFLUENCES (SOMETIMES)

- OPTIONS? → + AFFORDABLE - WAIT LIST.
- HW - \$90 pw
 - PRIVATE - \$200 pw??
↳ SHARE? JANICE...
 - TRANSITIONAL/FOYER?

20 YEARS



- * BIG GARDEN FOR DOGS + POOL!
- * BUILD MY OWN...
 - 3 BED AT LEAST
 - TV ROOM / CINEMA / GAMING ROOM
 - KIDS MAYBE...
 - GARAGE + WORKSHOP TO FIX UP CARS.
- * IN THE HILLS.

OR ABROAD!



Housing Supports through Home Stretch across Australia

Most states offer a financial subsidy payment to assist with Housing Costs

Universally there is an interdependence on existing housing stock, housing & homelessness systems and a young person's natural networks.

KPMG audit for the 2023 Home Stretch Symposium

What we found:



Across Australia, there is currently not enough stable housing options for young people 18-21 leaving care



Most states had crisis, short term and medium term housing options targeted at responding to youth homelessness but **limited stable housing options** to meet the volume of demand



The system is complex to navigate, with many different players providing responses that are **not always coordinated**, with many players and inconsistency of what is available in different areas, even in the same state.



There is a **need for a more complete spectrum of housing options for diverse and complex needs** with the majority of stable housing options requiring engagement in employment and/or education.



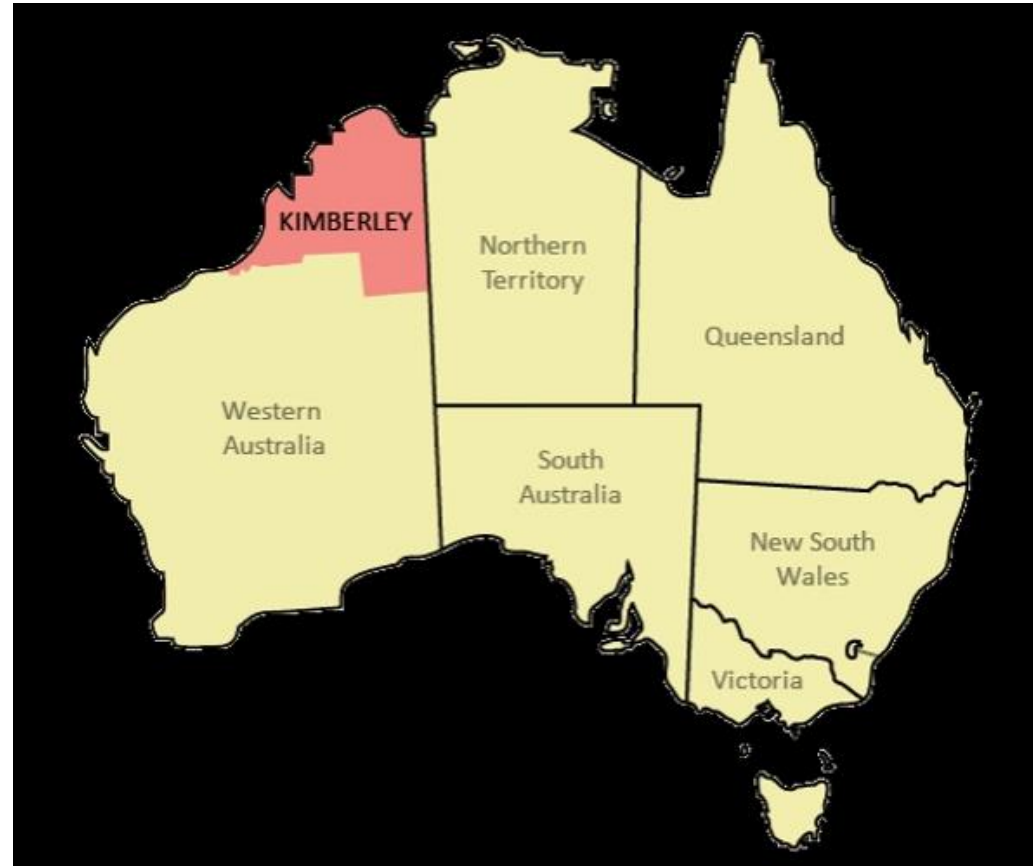
More needs to be done to embed **culturally responsive options** supporting First Nations young people to be connected to their Culture, Community and Kin



Kimberley
423,517 km²

Germany
357,600 km²

Victoria
227,444 km²





Homelessness in the Kimberley

A System Overwhelmed

Homelessness in the Kimberley is a systemic problem that cannot be fixed through subsidies and supports alone;

- The rate of homelessness is the highest in WA. (13.7% 2021)
- There is a massive shortage of housing stock across the region
- There is typically a 10 year wait for public housing
- Distance and costs impact availability of construction and building services needed to provide critical maintenance on existing housing stock.
- There are extremely limited number of supported housing options for young people.

Place Based - Culturally Strong – Community Led - Long-term

