



National Housing
Conference 2023

Major Concurrent 6: Housing systems and structural change

Amy Hains





Rare, brief and non-recurring

A system-wide
approach to ending
homelessness
together

Amy Hains
A/Chief Executive Officer




**What is the
problem we
are trying
to solve?**

**People are at risk of
homelessness and
experiencing
homelessness in NSW**

Purpose

Co-create a whole of system approach to ending homelessness in NSW to act together for a future where homelessness is rare, brief and non-recurring.

A silhouette of a person standing on a dark, rolling horizon with their arms raised in a gesture of triumph or hope. The background is a dark blue night sky filled with numerous small, bright stars, suggesting a vast, open future.

“Programs help people beat the odds. Systems change helps change the odds” .

Karen Pittman, Forum on Youth Investment



A systems view of homelessness

A system is a set of related components that work together in a particular environment to perform whatever functions are required to achieve the system's objective.



Engaging with all system actors



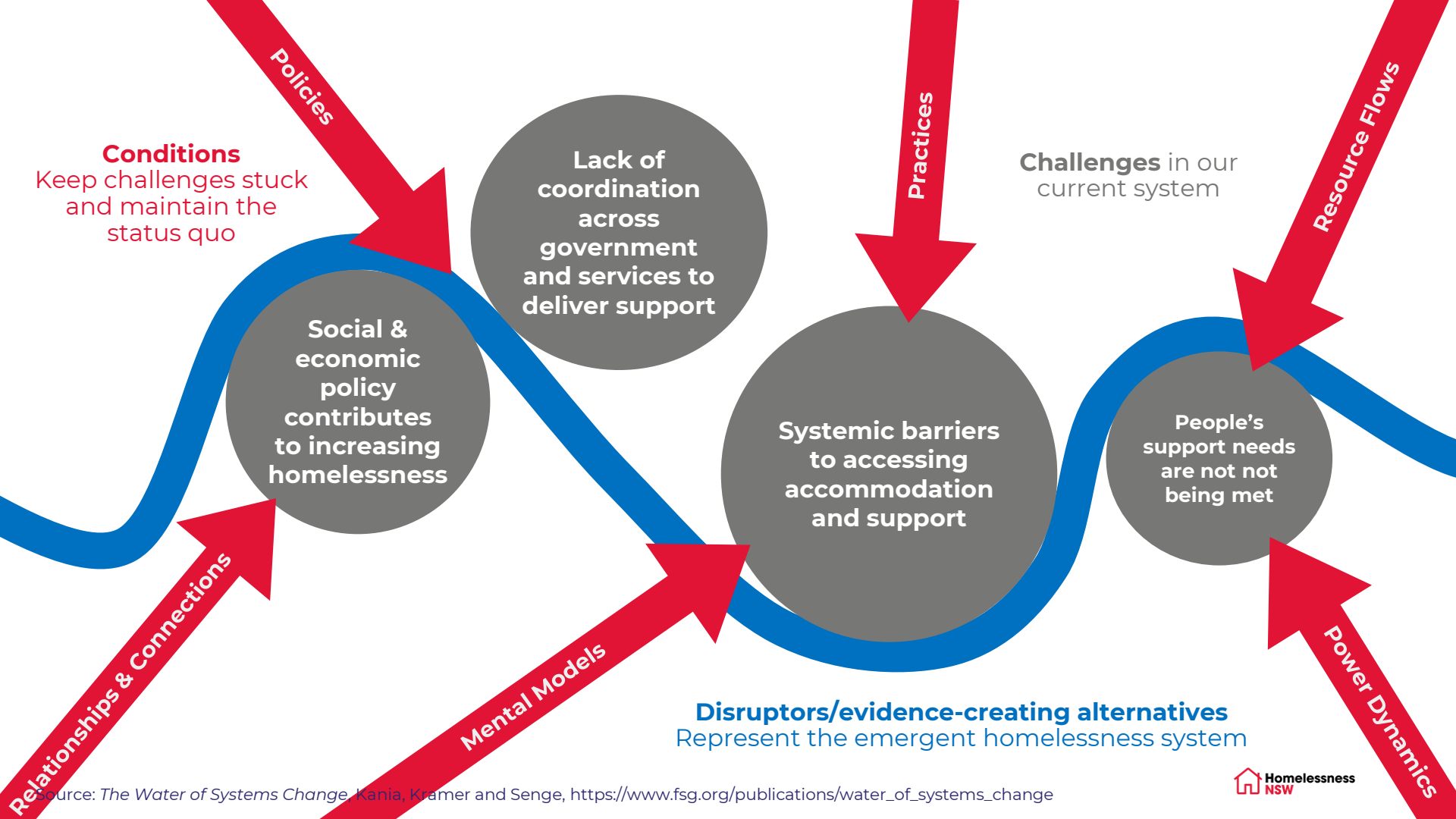
650+ people contributing

200+ organisations

Lived experience interviews

Series of workshops

Extensive literature review



Policies

Practices

Resource Flows

Challenges in our current system

Conditions
Keep challenges stuck and maintain the status quo

Lack of coordination across government and services to deliver support

Social & economic policy contributes to increasing homelessness

Systemic barriers to accessing accommodation and support

People's support needs are not being met

Disruptors/evidence-creating alternatives
Represent the emergent homelessness system

Relationships & Connections

Mental Models

Power Dynamics

How do we
change the
system?

How and where
to act



Leverage points in our system

RARE

(Prevention of homelessness)

Integrated policy and governance to address the drivers of homelessness

Raise income levels / reduce income disparity

Investment in family support and other early intervention

Prevent exits into homelessness from institutions (prison, hospitals)

Increase voice and agency of lived experience in governance and decision making



BRIEF

(Intervention and exits from homelessness)

Shared data and measurement to shape outcomes across the system

Coordinated, cross-service pathways out of homelessness

Systemic support for place-based service systems



NON-RECURRING

(Long term pathways out of homelessness)

Legislating for social and supported housing options

Investment to create diverse housing options

Investment to upgrade and maintain existing and new social housing stock

Support to keep a home and connect to community, education and employment

ACROSS ALL

Changemakers as allies for systemic impact

Person-centred service system design

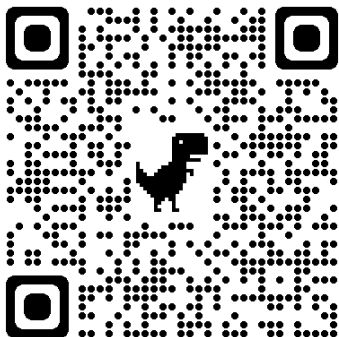
Data to manage the system + measure impact



Housing Data For NSW

Select Map Overlay

Total Dwellings



Total Dwellings (2021)



3,357,257

Median Weekly Household Income (2021)

\$1,829

Housing Completions Last Year (FY21/22)

29,647

Median Weekly Rent for new rentals (June 2023)

\$600

Rental Stress (2021)

35.0%

LGA

All

Region

All

Metro/Regional

All

Rental Vacancy Rates April - August 2023

NSW Totals:

April: 1.4%

June: 1.5%

July: 1.9%

August: 1.5%

● April ● June ● July ● August

Social Housing Dwellings

(2022)



155,117

630

change since 2021

Social Housing as a % of Total Dwellings (2022)

4.6%

How many social and affordable homes do we need to build per year?

Select one LGA

Unoccupied Dwellings (2021)



Unoccupied Dwellings as a % of Total Dwellings (2021)

Click here to learn about the impact of Short Term Rental Accommodation

We also need to work *differently*

Principles to guide how we work together to end homelessness

1. Everyone needs safe and secure housing

2. Shift power to people with lived experience

3. Trauma informed responses at every level of the system

4. Surface and address racism, structural and gender inequity across the system

5. Learn, adapt and evolve

6. Data-led decision making and evaluation of change

Changing the system together

- See ourselves in the system
- Commitment to a shared vision
- A new brand of collaboration – flexible structures and active learning
- Aligned, independent action
- Facilitation, portfolio approach and a “container”



*Deep Collaboration,
Collaboration For Impact*

Thank you

You can read our report via the QR code
Rare, brief and non-recurring: A system wide approach to ending homelessness together

