



North-West Aboriginal Housing Fund

Enabling pathways to independence and wellbeing



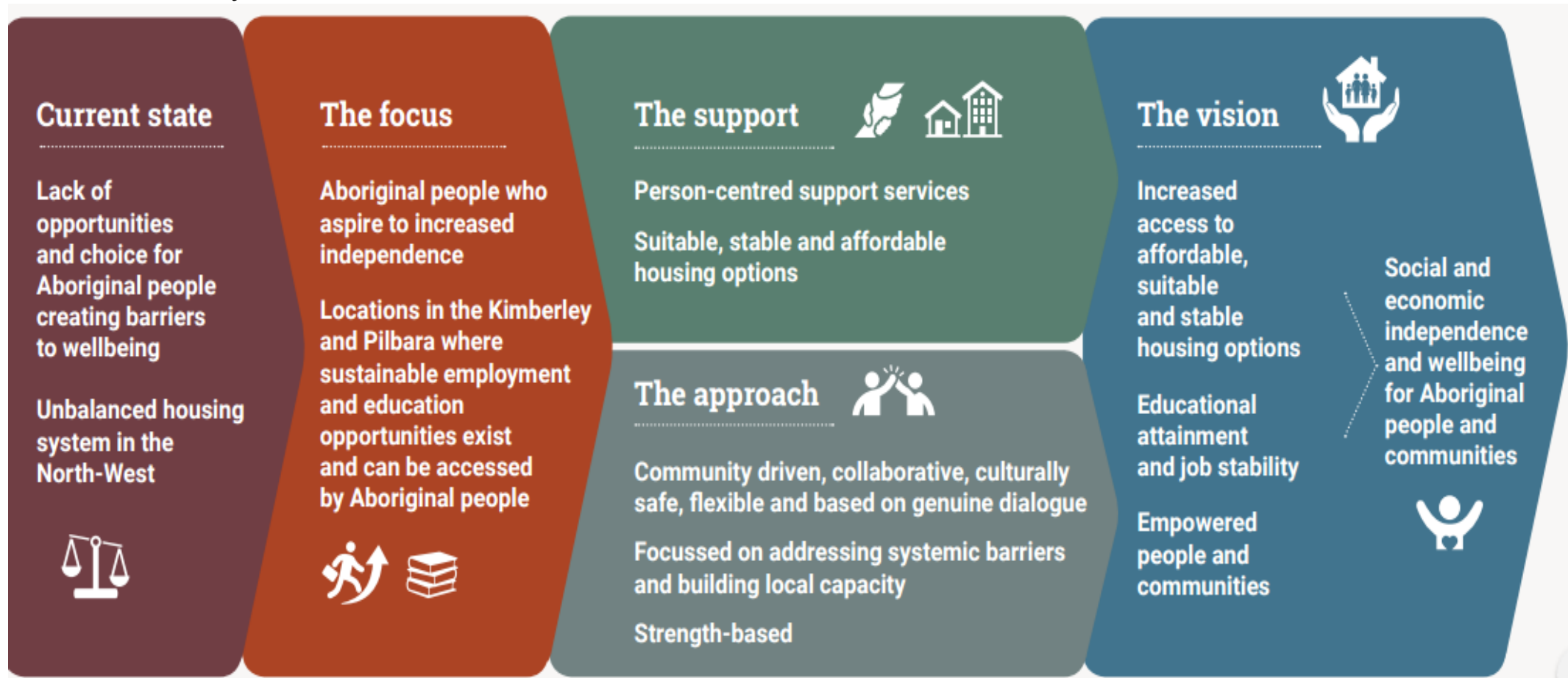
Department of **Communities**
Department of **Primary Industries
and Regional Development**

AHURI National Housing Conference
Fund Overview Presentation

Fund Overview: Vision

North-West
Aboriginal
Housing Fund

A \$200m fund aiming to create pathways towards social and economic independence and wellbeing for Aboriginal people and communities in the Pilbara and Kimberley.





North-West Aboriginal Housing Fund Snapshot

Investments to date

\$112.4 million
approved across
7 Investments



\$91.1 million
in Capital
Investment



\$14.4 million
in Operational
Investment



of which
\$75.8 million
delivered by
Aboriginal
Organisations



1.50
Average Social Return
on Approved Investments
(forecast social return \$158m)



Forecast outcomes



320
homes made
available for affordable
rental or home
ownership



63%
of assisted
households
diverted from
social housing



610+
children in
safe and stable
accommodation



430
Aboriginal people
employed in the
delivery of Fund
investments

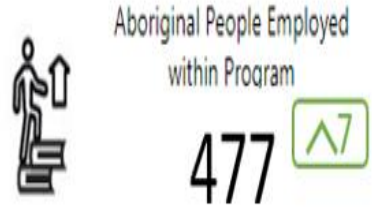
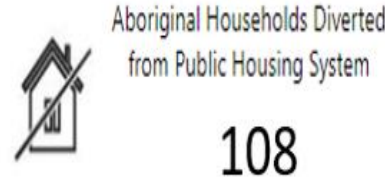


360+
families supported to
work towards their goals
of financial independence,
improved employment,
housing stability and
enhanced wellbeing



90
apprenticeships
supported

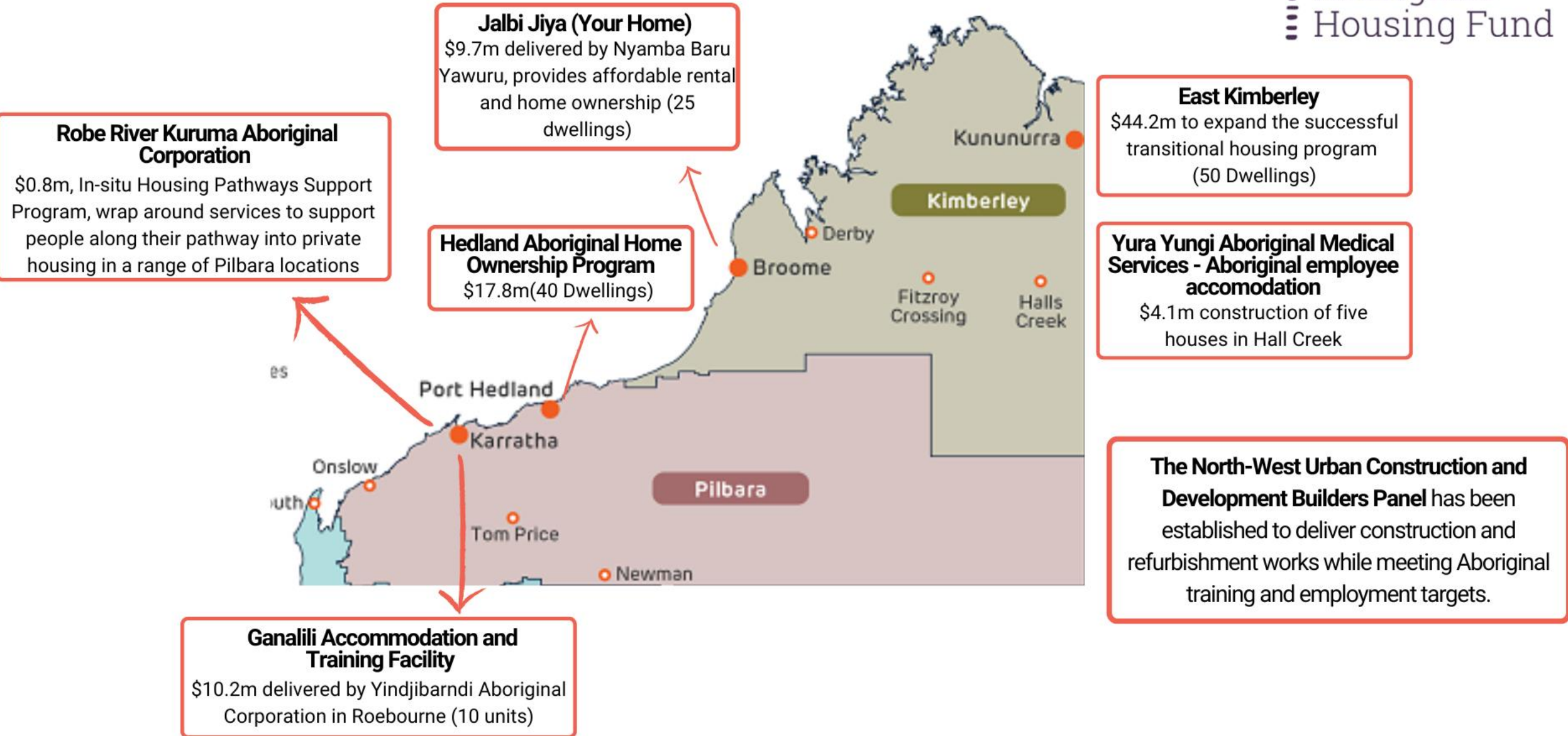
Live Impact Dashboard



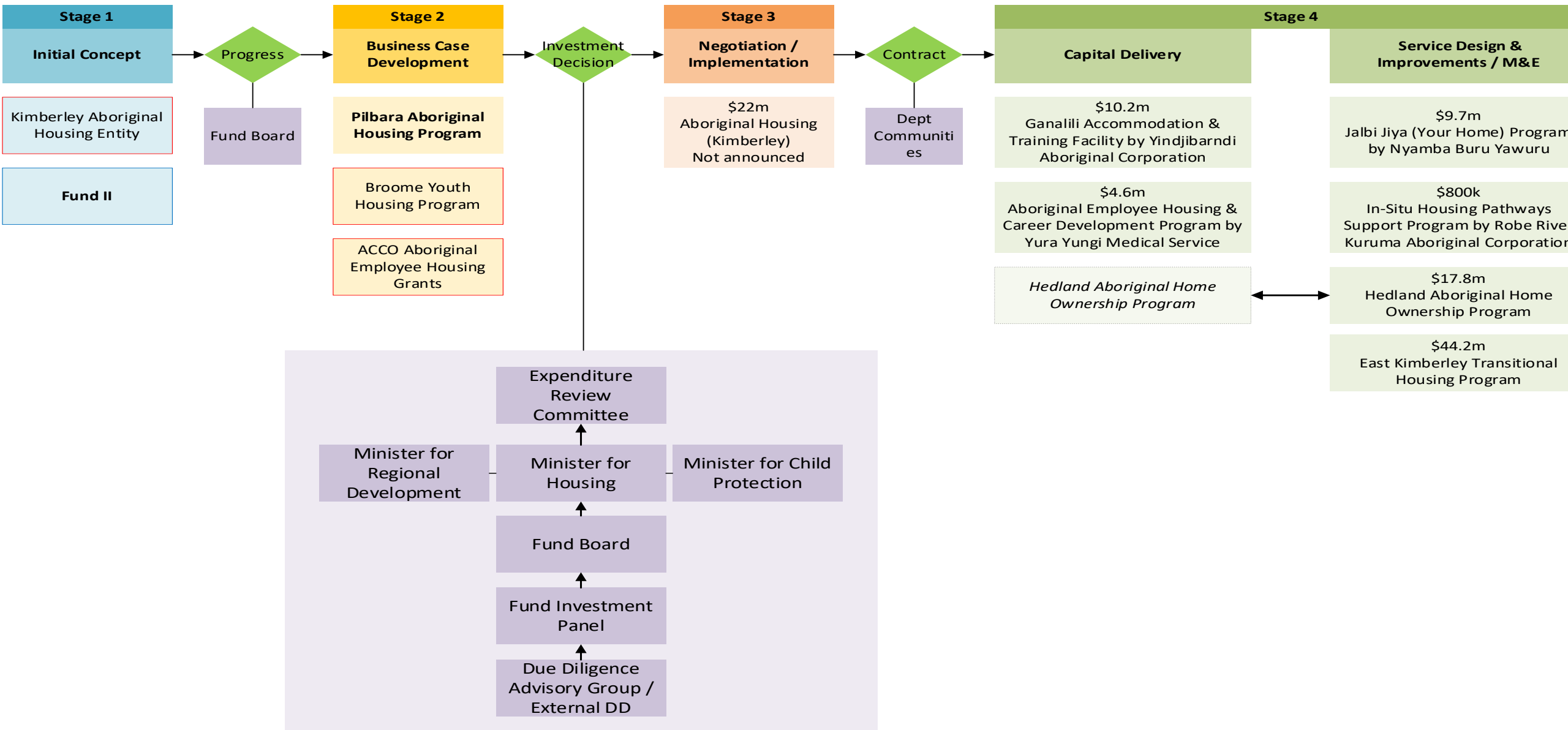
Target (Cabinet Submission)		Target (Cabinet Submission)	
Support 300 Aboriginal families		Support 30 Aboriginal apprenticeships	
Increase school attendance of 600 Aboriginal children		Support 15 Aboriginal families to own their own home	
Support employment 300 Aboriginal adults		\$25m in contracts awarded to Aboriginal owned entities	
Create 40 jobs per year for Aboriginal people		Divert Aboriginal people from public housing	

What we have invested so far...

North-West
Aboriginal
Housing Fund



Management Framework and Investments Overview



Jalbi Jiya - Nyamba Buru Yawuru (NBY) –

- The investment allows for 17 families to progress to home ownership, with 8 of the properties used as long-term, affordable rental properties.
- Leverages NBY's 'Mabu Liyan' wellbeing framework. Mabu Liyan is attained when connected to community, culture and country
- Interim evaluation completed in mid 2022.
- As of 15 August 2023, three participants have purchased homes within the program, with an additional participant building her own home.
- One application has been received and sale will be under the new Transitional Housing Sale Price Policy



Robe River Kuruma Aboriginal Corporation (RRKAC) In-situ Housing Pathways Support Program - Anthea

North-West
Aboriginal
Housing Fund

- Culturally secure in-situ housing support program to enable Aboriginal people in the Pilbara to transition from social housing, including employer provided housing, and unsuitable accommodation into stable and affordable private housing, thereby freeing up homes for people on the public housing Wait List.
- RRKAC is the registered native title body corporate for Robe River Kuruma (RRK) native title determined areas.
- A three-year pilot, to test assumptions and answer key questions about suitable pathways for Aboriginal people to achieve home ownership, barriers to economic independence for Aboriginal people in the Pilbara, and the design and delivery of culturally appropriate homes and support services for Aboriginal people.
- The pilot will be used to help determine levels of need and demand for a support service and housing supply.
- Supports 28 families, at any one time, over a three-year period through tailored, culturally secure support services in the Greater Karratha area – Karratha, Roebourne, and Wickham.



Hedland Aboriginal Home Ownership Program (HAHOP) –
Bloodwood Tree (BWT)

And

East Kimberley Transitional Housing Program - Nirrumbuk
Aboriginal Corporation

North-West
Aboriginal
Housing Fund

